

Santee-Lynches Area Base Labor Market Analysis



South Carolina
Department of
Commerce
Labor Market Information



September 2008

TABLE OF CONTENTS

EXECUTIVE SUMMARY	5
POPULATION	6
Growth	6
LABORSHED	7
Characteristics of Workers	7
INCOME	9
Per Capita Income	9
Wages by Industry	10
Wages by Occupation	11
EDUCATION	12
High School Graduates	12
Higher Education Graduates	13
OCCUPATIONS	14
Occupational Projections	14
Occupational Education Requirements	15
INDUSTRY	16
Businesses by Sector	16
Growth in Number of Businesses	17
Employment by Sector	17
Industry Analysis	18
MOVING FORWARD	19
Appendix A: Occupational Projections	

EXECUTIVE SUMMARY

Population

The Santee-Lynches area's population growth has been slower than the state's in recent years.

Future population growth is expected to continue to lag behind the state rate.

The Santee-Lynches area attracts workers predominantly from within its borders.

Over 40% live in Sumter County.

Income

Per capita income growth has exceeded the state' and nation's.

However, the Santee-Lynches area's per capita income remains below the state level.

The Santee-Lynches area's average wages are higher than those of the state for the following occupation groups: healthcare practitioners and technical, and protective service.

Education

The number of degrees awarded by area post-secondary institutions has increased.

The greatest increase has been in the area of business management.

Occupations

These occupational groups are expected to have faster growth in the Santee-Lynches Area than in the state:

Business and financial operations; computer and mathematical science; architecture and engineering; life, physical and social science; community and social services; healthcare practitioners and technical; protective service; building and grounds cleaning and maintenance; office and administrative support; construction and extraction; installation, maintenance and repair; production; and transportation and material moving.

Requirements for the Santee-Lynches area's workers are expected to grow in the following levels of education and experience:

Moderate-term on-the-job training, work experience in a related field, associate's degree, bachelor's degree, and master's degree or higher.

Industry

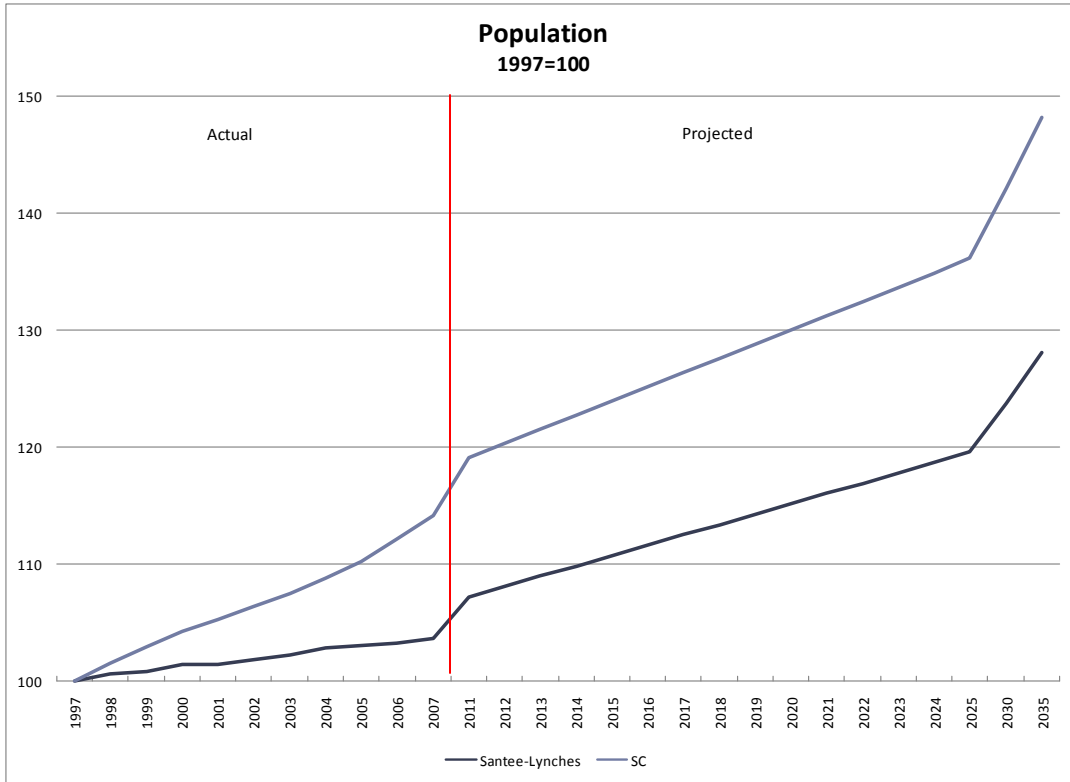
Sectors rated as having high potential in various parts of the Santee-Lynches area are as follows:

Building construction; heavy and civil engineering construction; fabricated metal product manufacturing; machinery manufacturing; transportation equipment manufacturing; merchant wholesalers, durable goods; truck transportation; and professional, scientific and technical services.

POPULATION

Growth

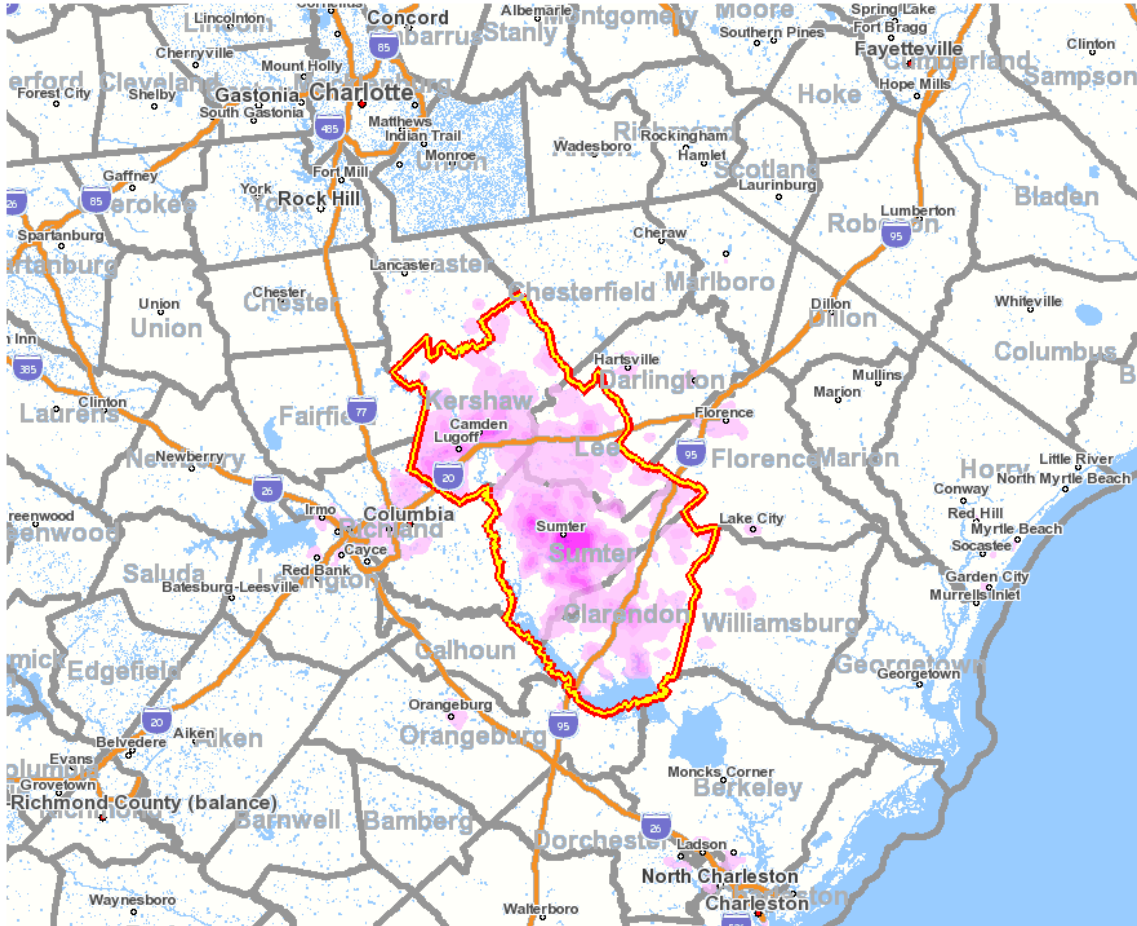
The Santee-Lynches area's 2007 population was 214,921. The area population has grown by 3.7% since 1997, compared to 14.2% for South Carolina. Future population growth is expected to continue to lag behind state levels.



Source: U.S. Census Bureau (estimates) and SC Budget & Control Board/Office of Research and Statistics (projections).

LABORSHED

The map below shows where Santee-Lynches area workers come from (in 2006, latest available data). The Santee-Lynches area draws over 70% of its workers from within its borders.



Source: U.S. Census Bureau, Local Employment Dynamics.

Characteristics of Workers

<u>Age of Workers:</u>		<u>Earnings of Workers:</u>	
30 or younger	24.6%	\$1,200 per month or less	32.4%
31 to 54	57.8%	\$1,201 to \$3,400 per month	46.7%
55 or older	17.6%	More than \$3,400 per month	20.9%

States Where Workers Live:

South Carolina	98.9%
North Carolina	0.6%
All other locations	0.5%

Counties Where Workers Live:

Sumter, SC	41.4%
Kershaw, SC	17.2%
Clarendon, SC	7.9%
Lee, SC	5.6%
Richland, SC	4.8%
Florence, SC	2.3%
Lexington, SC	1.8%
Orangeburg, SC	1.7%
Darlington, SC	1.6%
Horry, SC	1.4%
All other locations	14.4%

Cities Where Workers Live:

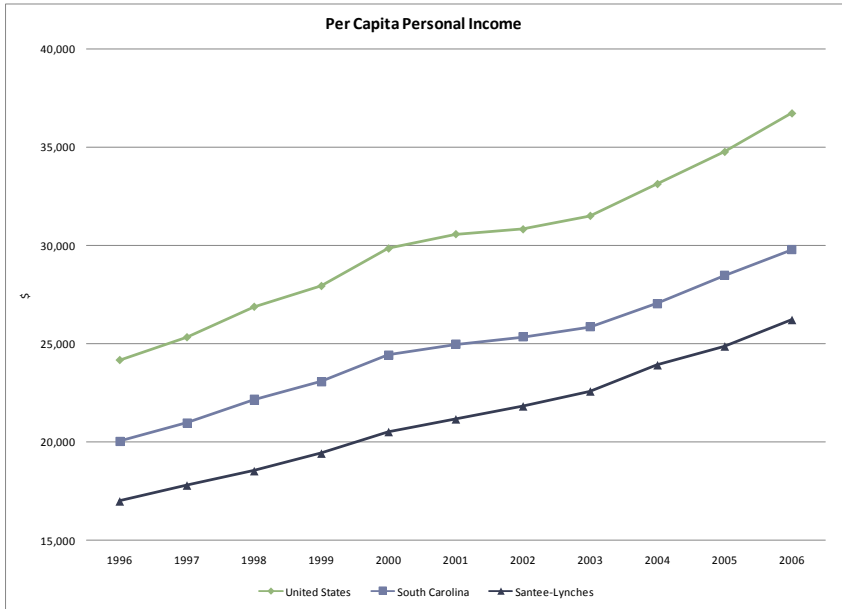
Sumter, SC	16.0%
Camden, SC	2.6%
Lugoff, SC	1.7%
Manning, SC	1.5%
South Sumter, SC	1.3%
Lakewood, SC	1.2%
Bishopville, SC	1.1%
Columbia, SC	1.0%
Dalzell, SC	1.0%
Privateer, SC	0.9%
All other locations	71.7%

Source: U.S. Census Bureau, Local Employment Dynamics.

INCOME

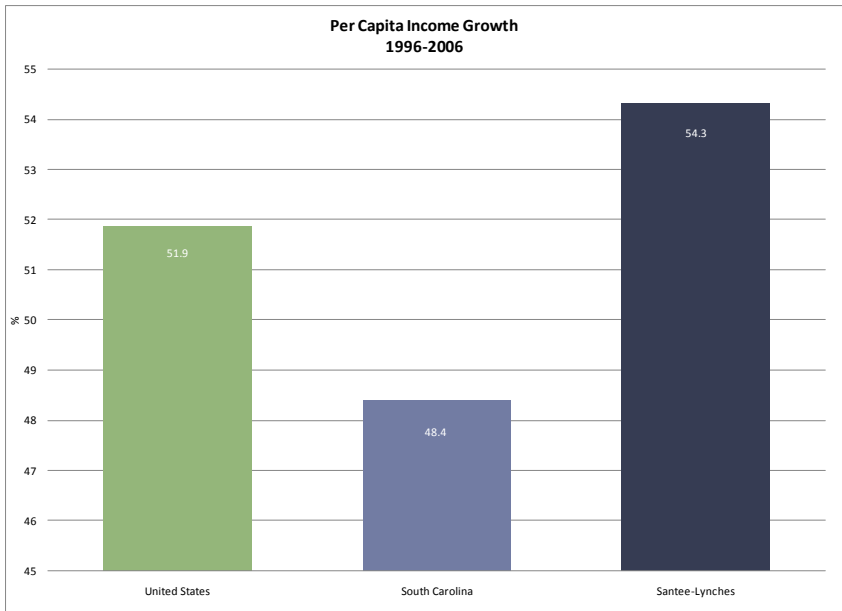
Per Capita Income

The Santee-Lynches area's per capita income increased steadily from 1996 to 2006 but remained below the state average.



Source: U.S. Department of Commerce, Bureau of Economic Analysis.

The Santee-Lynches area's per capita income growth has exceeded both South Carolina's and the United States'. As a result, the area has made up some ground on the state and nation in this key measure of economic vitality.



Source: U.S. Department of Commerce, Bureau of Economic Analysis.

Wages by Industry

The Santee-Lynches area's average wages are below those of South Carolina (\$579 vs. \$680 in 2007). Average wages were up 18% in the Santee-Lynches area over the past five years. All major sectors had growth over the past five years.

Industry	NAICS Code	2007 Average Weekly Wage (\$)	2002 Average Weekly Wage (\$)	% Change
Total, Private and Government		579	490	18
Construction	23	670	556	20
Manufacturing	31-33	736	604	22
Retail Trade	44-45	410	339	21
Transportation and Warehousing	48-49	634	497	28
Information	51	820	629	30
Finance and Insurance	52	683	632	8
Real Estate and Rental and Leasing	53	444	346	28
Administration & Support & Waste Management & Remediation Services	56	420	317	33
Arts, Entertainment, and Recreation	71	280	236	19
Accommodation and Food Services	72	207	179	16
Other Services (Except Public Administration)	81	413	347	19
Federal Government		777	648	20
State Government		633	586	8
Local Government		605	506	20

Source: U.S. Department of Labor, Bureau of Labor Statistics, Quarterly Census of Employment and Wages.

Wages by Occupation

Average wages in the Santee-Lynches area are higher than South Carolina's in the following major occupational groups:

- Healthcare practitioners and technical
- Protective service

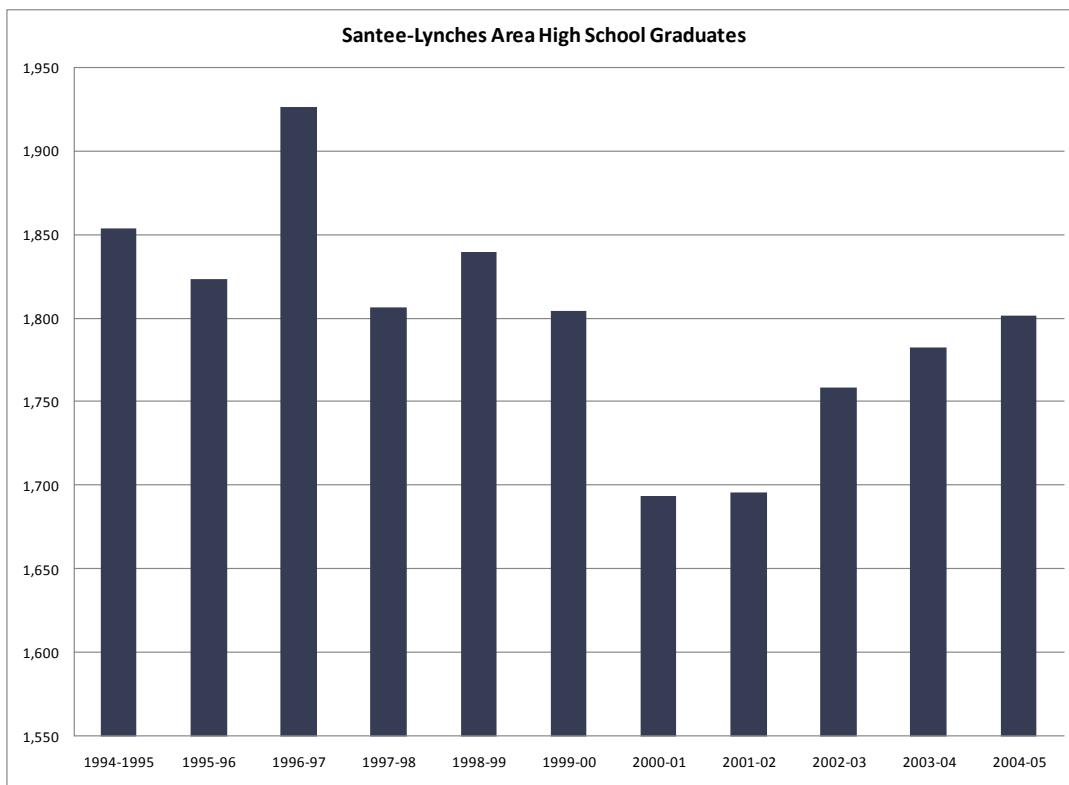
Occupation	2007 Santee-Lynches Area Median Hourly Wage (\$)	2007 SC Median Hourly Wage (\$)
Management occupations	21.91	28.78
Business and financial operations occupations	16.79	20.28
Computer and mathematical science occupations	20.43	26.20
Architecture and engineering occupations	27.07	30.22
Life, physical and social science occupations	21.55	22.76
Community and social services occupations	12.95	13.18
Legal occupations	23.84	30.68
Education, training and library occupations	21.62	24.42
Arts, design, entertainment, sports and media occupations	11.20	12.66
Healthcare practitioners and technical occupations	30.76	30.64
Healthcare support occupations	8.97	10.55
Protective service occupations	13.97	13.87
Food preparation and serving related occupations	7.23	7.90
Building and grounds cleaning and maintenance occupations	7.19	8.42
Personal care and service occupations	7.31	8.39
Sales and related occupations	10.77	13.48
Office and administrative support occupations	11.44	13.22
Farming, fishing, and forestry occupations	11.47	13.07
Construction and extraction occupations	14.48	16.51
Installation, maintenance and repair occupations	15.08	16.88
Production occupations	14.91	15.21
Transportation and material moving occupations	11.98	12.94

Source: *Economic Modeling Specialists, Inc.*

EDUCATION

High School Graduates

From 1995 to 2005 (latest data available), the number of Santee-Lynches area students receiving high school diplomas dropped by 52—or 3%. In South Carolina, on the other hand, the number of high school diplomas increased 9% from 1995 to 2005. A total of 1,802 people received high school diplomas in the Santee-Lynches area in 2005. The Santee-Lynches area had 111 fewer 12th grade students in 2004-05 than in 1994-95. Also, the number of students not passing the exit exam who received a certificate of completion instead of a diploma increased by 174 (to 235) over the 1995-2005 period.



Source: National Center for Education Statistics.

Higher Education Graduates

Over 1,300 more students graduated from higher educational institutions in the Santee-Lynches area in 2006 than in 1996, an increase of 13%. The greatest numerical increase was in business management fields.

Program	1996	2006	Change	% Change
Agriculture, agriculture operations & related sciences	16	4	-12	-75
Area, ethnic, cultural & gender studies	19	26	7	37
Biological & biomedical sciences	434	458	24	6
Business, management, marketing & related support services	1,685	2,173	488	29
Communication, journalism & related programs	353	428	75	21
Computer & information sciences & support services	181	239	58	32
Construction trades	1	3	2	200
Education	1,262	1,205	-57	-5
Engineering technologies/technicians	123	160	37	30
Engineering	289	315	26	9
English language & literature/letters	310	276	-34	-11
Family & consumer sciences/human sciences	117	246	129	110
Foreign languages, literatures & linguistics	81	71	-10	-12
Health professions & related clinical sciences	1,236	1,330	94	8
Legal professions & studies	324	324	0	0
Liberal arts & sciences, general studies & humanities	672	391	-281	-42
Library science	185	200	15	8
Mathematics and statistics	129	99	-30	-23
Mechanic and repair technologies/technicians	106	248	142	134
Multi/interdisciplinary studies	37	86	49	132
Natural resources & conservation	15	3	-12	-80
Parks, recreation, leisure & fitness studies	125	240	115	92
Personal & culinary services	2	38	36	1,800
Philosophy & religious studies	30	52	22	73
Physical sciences	167	162	-5	-3
Precision production	89	99	10	11
Psychology	353	445	92	26
Public administration & social service professions	325	365	40	12
Security & protective services	359	343	-16	-4
Social sciences & history	719	823	104	14
Theology & religious vocations	284	338	54	19
Visual & performing arts	195	339	144	74
TOTAL	10,223	11,529	1,306	13

Source: National Center for Education Statistics (Integrated Post Secondary Education System).

Data for these schools: Allen University, Benedict College, Central Carolina Technical College, Claflin University, Coker College, Columbia College, Columbia International University, Florence-Darlington Technical College, Francis Marion University, Lutheran Theological Seminary, McLeod Regional Medical Center School of Medical Technology, Morris College, Northeastern Technical College, Orangeburg-Calhoun Technical College, South Carolina State University, South University, Southern Methodist College, University of South Carolina-Columbia, University of South Carolina-Lancaster, University of South Carolina-Sumter, Williamsburg Technical College.

OCCUPATIONS

Occupational Projections

The following occupational groups are projected to grow faster in the Santee-Lynches area than in the state:

- Business and financial operations
- Computer and mathematical science
- Architecture and engineering
- Life, physical and social science
- Community and social services
- Healthcare practitioners and technical
- Protective service
- Building and grounds cleaning and maintenance
- Office and administrative support
- Construction and extraction
- Installation, maintenance and repair
- Production
- Transportation and material moving

See **Appendix A** for detailed occupational information.

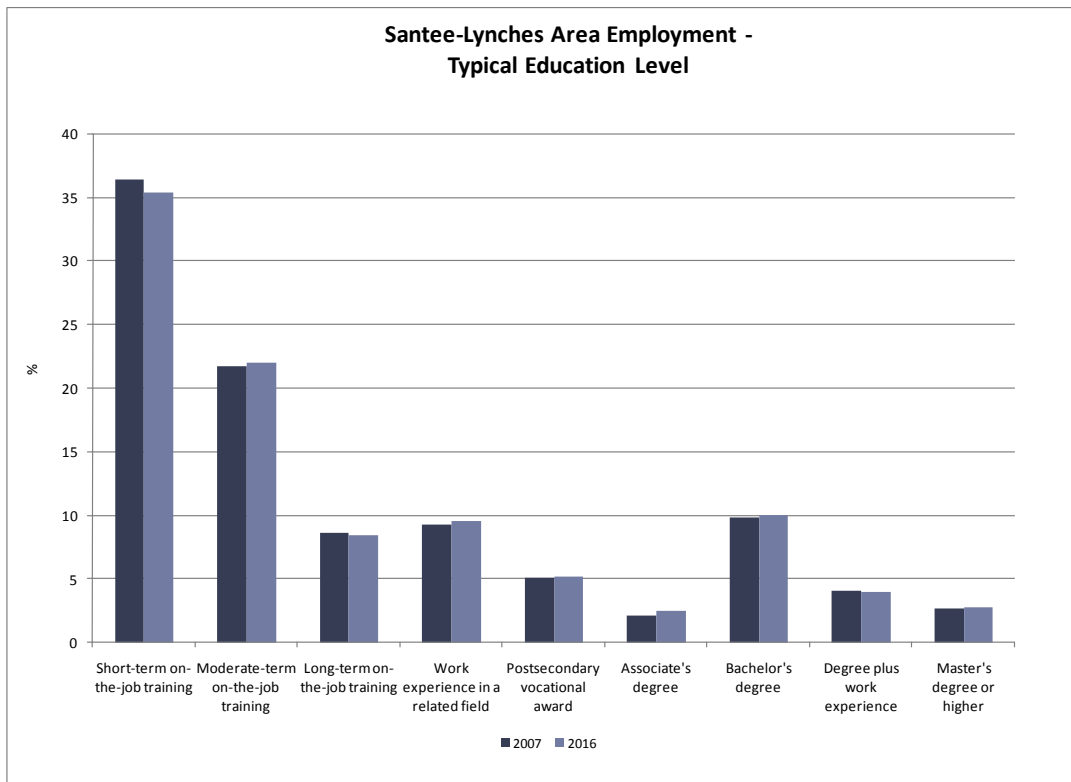
Occupation	2007-2016 Santee-Lynches Area Projected Growth (%)	2007-2016 SC Projected Growth (%)
Management occupations	17	17
Business and financial operations occupations	27	22
Computer and mathematical science occupations	29	23
Architecture and engineering occupations	19	15
Life, physical and social science occupations	16	15
Community and social services occupations	20	15
Legal occupations	17	21
Education, training, and library occupations	13	16
Arts, design, entertainment, sports and media occupations	16	17
Healthcare practitioners and technical occupations	37	24
Healthcare support occupations	24	25
Protective service occupations	28	18
Food preparation and serving related occupations	10	13
Building and grounds cleaning and maintenance occupations	27	23
Personal care and service occupations	7	7
Sales and related occupations	17	19
Office and administrative support occupations	15	13
Farming, fishing, and forestry occupations	14	16
Construction and extraction occupations	22	19
Installation, maintenance and repair occupations	18	17
Production occupations	17	10
Transportation and material moving occupations	15	11

Source: Economic Modeling Specialists, Inc.

Occupational Education Requirements

Occupational growth trends show that education and training requirements are generally increasing. This is reflected in the projected growth of occupations such as engineers, business professionals, healthcare practitioners and skilled production workers in the Santee-Lynches area. Based on employment projections, the Santee-Lynches area is expected to see growth in requirements for the following levels of education and experience:

- Moderate-term on-the-job training
- Work experience in a related field
- Associate's degree
- Bachelor's degree
- Master's degree or higher



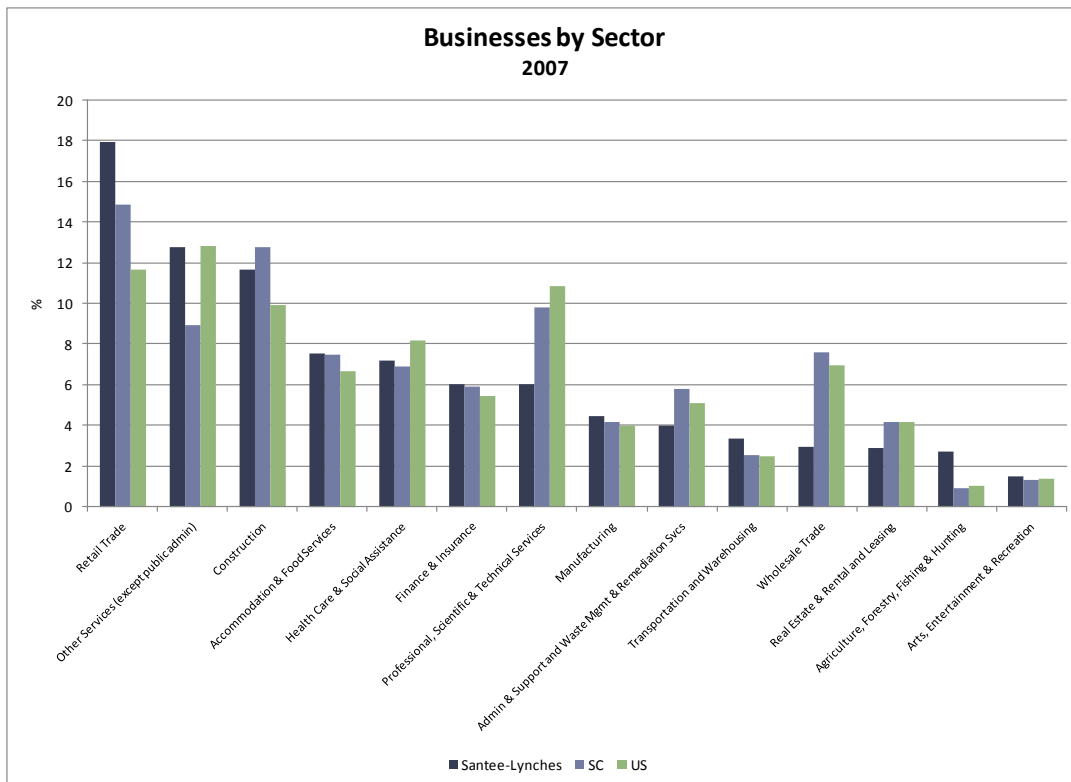
Source: *Economic Modeling Specialists, Inc*

INDUSTRY

Businesses by Sector

The Santee-Lynches area had higher percentages of businesses than South Carolina or the nation in the following sectors:

- Retail trade
- Accommodation and food services
- Finance and insurance
- Manufacturing
- Transportation and warehousing
- Agriculture and forestry
- Arts, entertainment and recreation



Source: U.S. Department of Labor, Bureau of Labor Statistics.

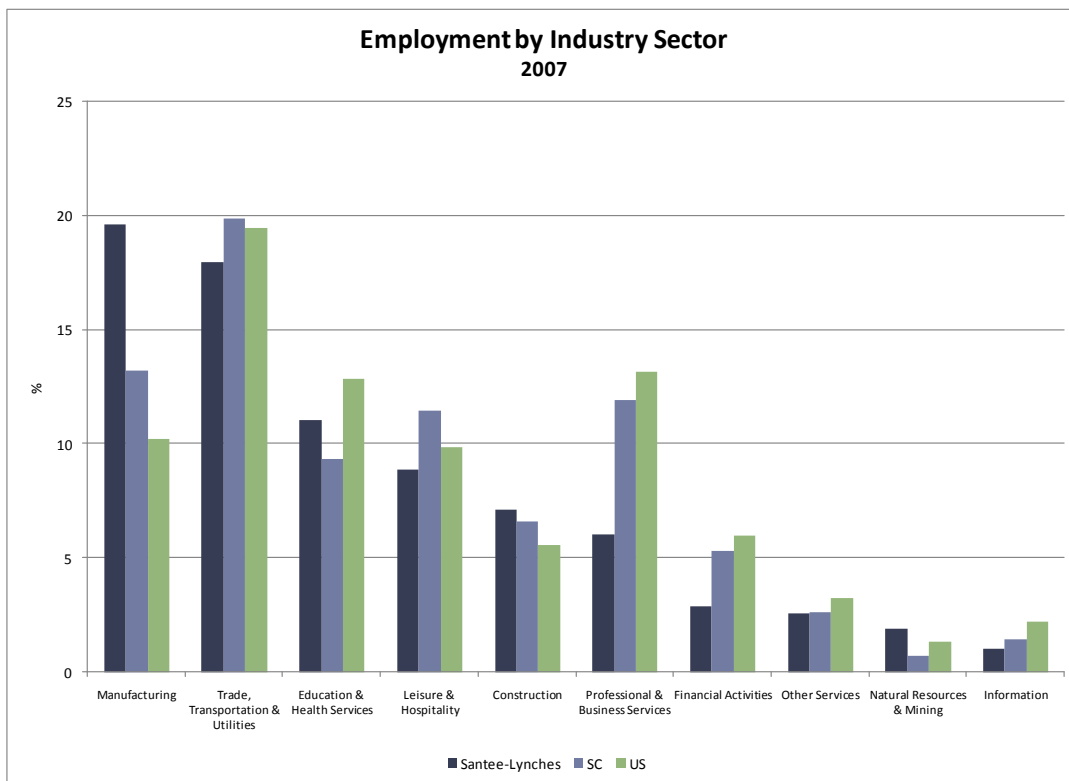
Growth in Number of Businesses

The number of private businesses in the Santee-Lynches area fell 6% from 2002 to 2007, compared to a 2% drop for the state.

Because the amount of detailed data varies by county, information for three-digit NAICS code sectors for the Santee-Lynches area as a whole is unavailable. Please see county reports for information on growth by detailed industry sectors.

Employment by Sector

Compared to South Carolina and the United States, the Santee-Lynches area's employment is much more concentrated in manufacturing. The area also has a higher concentration of employment in construction and natural resources and mining.



Source: U.S. Department of Labor, Bureau of Labor Statistics.

Industry Analysis

Screening Criteria

For each county in the Santee-Lynches area, industry sectors with available data were rated on six factors:

- 2002-2007 employment growth Competitive effect¹
- 2002-2007 employment growth rate Average annual wage
- Location quotient² Projected growth

Using those factors, sectors were awarded “stars” based on meeting the following criteria:

- 2002-2007 employment growth (Did the sector add a significant number of jobs?)
- 2002-2007 employment growth rate (Did the sector add jobs?)
- Location quotient of at least 1.25 (Does the sector have a significant concentration in the county?)
- Competitive effect greater than 0 (Did the sector add jobs beyond national growth overall and in the sector?)
- Average annual wage greater than the overall county average (Does the sector pay wages greater than average for the county?)
- Average or above average projected growth (Is the sector expected to add jobs?)

Industries of Note

Based on the analyses for each county in the Pee Dee area, the following sectors of note were identified (and the counties for which they were significant):

- Building construction (Kershaw, Sumter)
- Heavy and civil engineering construction (Kershaw, Sumter)
- Fabricated metal product manufacturing (Kershaw, Sumter)
- Machinery manufacturing (Sumter)
- Transportation equipment manufacturing (Kershaw)
- Merchant wholesalers, durable goods (Sumter)
- Truck transportation (Clarendon, Kershaw, Lee, Sumter)
- Professional, scientific and technical services (Sumter)

See the reports for each county for information about the respective industries of note as well as other sectors in the county.

¹ *Competitive Effect: based on shift-share analysis; represents the change in employment in the sector in the county after accounting for overall US employment growth and growth/decline in the sector in the US.*

² *Location Quotient: percentage of employment in the sector in the county divided by the percentage of employment in that sector in the US; gives an indication of how concentrated employment in the sector is in the county compared to the US; based on 2007 data.*

MOVING FORWARD

The South Carolina Department of Commerce appreciates the opportunity to provide this base analysis of the Santee-Lynches area's labor market. We hope that it will help in advancing the progress of the Santee-Lynches area's economic development.

What's been done so far?

This analysis identifies the region's assets—both current and future—at a macro level. Labor Market Information (LMI) at the S.C. Department of Commerce developed a Base Labor Analysis report providing an overview of the region's population, industries, occupations, and educational assets. Additionally, these findings were benchmarked against the state and the nation.

What's next?

Because local knowledge is required to interpret and apply the findings appropriately, the Santee-Lynches Base Labor Analysis should be used with local stakeholders to identify and define key, targeted industry clusters. Some items to consider when defining these clusters may include the following.

1. ***What is the Santee-Lynches area's economic base?***

In order for an economy to grow, it must have a base (export) sector that generates wealth from beyond its borders. Industries in the economic base (manufacturing, scientific and technology services, warehouse and distribution, financial services, regional healthcare, etc.) typically provide occupations with higher pay and benefits as well as better human capital development and promotion opportunities. A successful economic base stimulates the development of the non-base sector (housing, schools, retail, restaurants, personal services, etc.). It also propels the local tax base which, in turn, provides support to community services.

2. ***What are strategies to assist low-wage citizens in non-base economy jobs?***

Although the economic base is the driver for long-term growth in a region, implementable strategies for developing job opportunities for low-skilled individuals is a priority for community economic well-being. This need must also be kept in mind when defining target industry clusters.

3. ***What other factors are vital to the Santee-Lynches area and its communities?***

Over and above pure economic considerations, what is important to the citizens of the Santee-Lynches area? How does Santee-Lynches want to be perceived? What quality of life issues affect Santee-Lynches? These questions may impact the types of industries desired for the area.

How Labor Market Information at the S.C. Department of Commerce can help.

Once local stakeholders have identified key industry clusters vital to the future economic development of the region, LMI can provide more in-depth analysis of each of these industries, their occupations, business establishments, and educational requirements.

1. Detailed Industry Analysis

For each identified industry, LMI can develop a detailed analysis of each sector, including employment, projected growth, staffing patterns, location quotients, and employers. Additionally, the analysis will examine the largest, fastest growing, and declining sectors within the industry cluster.

2. Detailed Occupational Analysis

At this point, the occupations—classified by SOC codes—that make up each of the identified industry clusters can be analyzed in detail. This analysis will include employment, average earnings, educational requirements, projected growth, and completers from available local training programs. It will culminate in identifying gaps between the number of occupations required to sustain and advance industry growth and the number of skilled workers (as identified by educational requirements and program completers) available to fulfill these positions.

3. Identification of Implementable Recommendations

LMI will utilize the findings of the analyses to develop a set of implementable recommendations. These may include recommendations to align community college programs with economic development goals along with others. Finally, local knowledge will once again be called upon to review the findings and develop an action plan for the implementation of feasible solutions.

Appendix A: Occupational Projections for Santee-Lynches Area

SOC Code	Description	2007 Jobs	2016 Jobs	Change	% Change	2007 National LQ	2007 Median Hourly Earnings (\$)	Typical Education & Training Level
11-2011	Advertising and promotions managers	21	24	3	14	0.68	18.55	Degree plus work experience
11-2021	Marketing managers	51	60	9	18	0.44	23.90	Degree plus work experience
11-2022	Sales managers	98	117	19	19	0.49	25.82	Degree plus work experience
11-2031	Public relations managers	27	33	6	22	0.89	24.14	Degree plus work experience
11-3011	Administrative services managers	120	140	20	17	0.87	25.27	Degree plus work experience
11-3021	Computer and information systems managers	70	86	16	23	0.45	37.31	Degree plus work experience
11-3031	Financial managers	212	263	51	24	0.57	25.15	Degree plus work experience
11-3041	Compensation and benefits managers	19	22	3	16	0.64	26.40	Degree plus work experience
11-3042	Training and development managers	17	21	4	24	0.91	30.20	Degree plus work experience
11-3049	Human resources managers, all other	18	21	3	17	0.51	31.03	Degree plus work experience

SOC Code	Description	2007 Jobs	2016 Jobs	Change	% Change	2007 National LQ	2007 Median Hourly Earnings (\$)	Typical Education & Training Level
11-3051	Industrial production managers	118	136	18	15	1.33	39.15	Work experience in a related field
11-3061	Purchasing managers	36	40	4	11	0.94	32.53	Degree plus work experience
11-3071	Transportation, storage, and distribution managers	34	39	5	15	0.59	29.84	Work experience in a related field
11-9011	Farm, ranch, and other agricultural managers	262	259	-3	-1	1.35	5.86	Degree plus work experience
11-9012	Farmers and ranchers	1,293	1,278	-15	-1	1.35	5.85	Long-term on-the-job training
11-9021	Construction managers	635	832	197	31	1.53	23.65	Bachelor's degree
11-9031	Education administrators, preschool and child care center/program	43	46	3	7	0.58	11.95	Degree plus work experience
11-9032	Education administrators, elementary and secondary school	225	256	31	14	1.34	39.13	Degree plus work experience
11-9033	Education administrators, postsecondary	50	58	8	16	0.47	23.03	Degree plus work experience
11-9039	Education administrators, all other	28	33	5	18	0.52	17.70	Degree plus work experience
11-9041	Engineering managers	68	79	11	16	0.63	37.62	Degree plus work experience
11-9051	Food service managers	241	333	92	38	0.96	14.43	Work experience in a related field

SOC Code	Description	2007 Jobs	2016 Jobs	Change	% Change	2007 National LQ	2007 Median Hourly Earnings (\$)	Typical Education & Training Level
11-9061	Funeral directors	14	10	-4	-29	--	--	Associate's degree
11-9081	Lodging managers	112	152	40	36	1.39	12.78	Work experience in a related field
11-9111	Medical and health services managers	106	142	36	34	0.62	31.83	Degree plus work experience
11-9131	Postmasters and mail superintendents	15	16	1	7	1.10	28.87	Work experience in a related field
11-9141	Property, real estate, and community association managers	420	599	179	43	0.65	9.08	Bachelor's degree
11-9151	Social and community service managers	53	66	13	25	0.63	12.80	Bachelor's degree
11-9199	Managers, all other	606	746	140	23	0.68	37.82	Work experience in a related field
11-1011	Chief executives	559	681	122	22	0.90	31.60	Degree plus work experience
11-1021	General and operations managers	1,045	1,156	111	11	1.01	28.56	Degree plus work experience
11-1031	Legislators	84	95	11	13	2.40	10.27	Degree plus work experience
13-1022	Wholesale and retail buyers, except farm products	48	54	6	13	0.50	15.80	Work experience in a related field
13-1023	Purchasing agents, except wholesale, retail, and farm products	113	134	21	19	0.69	22.26	Work experience in a related field

SOC Code	Description	2007 Jobs	2016 Jobs	Change	% Change	2007 National LQ	2007 Median Hourly Earnings (\$)	Typical Education & Training Level
13-1031	Claims adjusters, examiners, and investigators	79	87	8	10	0.46	19.23	Long-term on-the-job training
13-1032	Insurance appraisers, auto damage	11	12	1	9	0.66	14.61	Long-term on-the-job training
13-1041	Compliance officers, except agriculture, construction, health and safety, and transportation	50	57	7	14	0.39	17.98	Long-term on-the-job training
13-1051	Cost estimators	115	149	34	30	0.85	21.17	Work experience in a related field
13-1071	Employment, recruitment, and placement specialists	95	113	18	19	0.83	17.56	Bachelor's degree
13-1072	Compensation, benefits, and job analysis specialists	21	25	4	19	0.31	19.70	Bachelor's degree
13-1073	Training and development specialists	57	71	14	25	0.47	19.78	Bachelor's degree
13-1079	Human resources, training, and labor relations specialists, all other	31	39	8	26	0.24	21.70	Bachelor's degree
13-1081	Logisticians	12	14	2	17	0.25	24.10	Bachelor's degree
13-1111	Management analysts	211	293	82	39	0.37	16.51	Degree plus work experience
13-1121	Meeting and convention planners	29	39	10	34	0.59	8.65	Bachelor's degree
13-1199	Business operation specialists, all other	208	261	53	25	0.35	21.65	Bachelor's degree
13-2011	Accountants and auditors	502	653	151	30	0.57	16.18	Bachelor's degree
13-2021	Appraisers and assessors of real estate	155	221	66	43	0.66	10.66	Postsecondary vocational award
13-2041	Credit analysts	15	15	0	0	0.38	22.70	Bachelor's degree

SOC Code	Description	2007 Jobs	2016 Jobs	Change	% Change	2007 National LQ	2007 Median Hourly Earnings (\$)	Typical Education & Training Level
13-2051	Financial analysts	51	75	24	47	0.27	12.54	Bachelor's degree
13-2052	Personal financial advisors	185	271	86	46	0.47	8.87	Bachelor's degree
13-2053	Insurance underwriters	22	24	2	9	0.36	18.82	Bachelor's degree
13-2071	Loan counselors	25	25	0	0	0.85	17.37	Bachelor's degree
13-2072	Loan officers	117	125	8	7	0.54	21.95	Bachelor's degree
13-2082	Tax preparers	44	51	7	16	0.67	10.53	Moderate-term on-the-job training
13-2099	Financial specialists, all other	26	20	-6	-23	0.31	14.15	Bachelor's degree
15-1021	Computer programmers	87	92	5	6	0.32	21.21	Bachelor's degree
15-1031	Computer software engineers, applications	25	37	12	48	0.08	24.43	Bachelor's degree
15-1032	Computer software engineers, systems software	31	46	15	48	0.15	25.29	Bachelor's degree
15-1041	Computer support specialists	108	131	23	21	0.34	14.52	Associate's degree
15-1051	Computer systems analysts	71	97	26	37	0.25	22.80	Bachelor's degree
15-1061	Database administrators	12	16	4	33	0.18	19.24	Bachelor's degree
15-1071	Network and computer systems administrators	66	86	20	30	0.37	23.80	Bachelor's degree
15-1081	Network systems and data communications analysts	36	56	20	56	0.23	20.47	Bachelor's degree
15-1099	Computer specialists, all other	15	20	5	33	0.12	18.29	Associate's degree
15-2031	Operations research analysts	10	12	2	20	--	--	Master's degree

SOC Code	Description	2007 Jobs	2016 Jobs	Change	% Change	2007 National LQ	2007 Median Hourly Earnings (\$)	Typical Education & Training Level
17-1011	Architects, except landscape and naval	32	37	5	16	0.38	21.03	Bachelor's degree
17-1012	Landscape architects	25	30	5	20	0.66	16.46	Bachelor's degree
17-1022	Surveyors	27	32	5	19	0.76	15.55	Bachelor's degree
17-2041	Chemical engineers	34	34	0	0	2.05	43.65	Bachelor's degree
17-2051	Civil engineers	97	113	16	16	0.60	26.20	Bachelor's degree
17-2071	Electrical engineers	46	53	7	15	0.52	39.25	Bachelor's degree
17-2072	Electronics engineers, except computer	15	17	2	13	0.19	37.82	Bachelor's degree
17-2081	Environmental engineers	18	20	2	11	0.58	26.54	Bachelor's degree
17-2111	Health and safety engineers, except mining safety engineers and inspectors	15	17	2	13	1.05	38.08	Bachelor's degree
17-2112	Industrial engineers	150	210	60	40	1.31	27.84	Bachelor's degree
17-2131	Materials engineers	10	13	3	30	0.83	36.99	Bachelor's degree
17-2141	Mechanical engineers	134	152	18	13	1.05	36.03	Bachelor's degree
17-2161	Nuclear engineers	15	18	3	20	0.95	46.81	Bachelor's degree
17-2199	Engineers, all other	21	25	4	19	0.22	25.29	Bachelor's degree
17-3011	Architectural and civil drafters	28	30	2	7	0.43	18.66	Postsecondary vocational award
17-3012	Electrical and electronics drafters	100	120	20	20	4.58	22.47	Postsecondary vocational award

SOC Code	Description	2007 Jobs	2016 Jobs	Change	% Change	2007 National LQ	2007 Median Hourly Earnings (\$)	Typical Education & Training Level
17-3013	Mechanical drafters	41	47	6	15	0.92	19.04	Postsecondary vocational award
17-3022	Civil engineering technicians	13	14	1	8	0.25	19.20	Associate's degree
17-3023	Electrical and electronic engineering technicians	63	72	9	14	0.64	23.82	Associate's degree
17-3026	Industrial engineering technicians	46	54	8	17	1.11	18.67	Associate's degree
17-3027	Mechanical engineering technicians	24	25	1	4	0.88	20.64	Associate's degree
17-3029	Engineering technicians, except drafters, all other	18	20	2	11	0.39	29.97	Associate's degree
17-3031	Surveying and mapping technicians	30	34	4	13	0.63	13.67	Moderate-term on-the-job training
19-1031	Conservation scientists	14	15	1	7	1.06	17.88	Bachelor's degree
19-1032	Foresters	19	20	1	5	2.10	22.67	Bachelor's degree
19-2031	Chemists	36	35	-1	-3	0.76	28.83	Bachelor's degree
19-2041	Environmental scientists and specialists, including health	18	21	3	17	0.33	18.70	Master's degree
19-2042	Geoscientists, except hydrologists and geographers	17	21	4	24	0.70	15.93	Master's degree
19-3021	Market research analysts	29	33	4	14	0.19	16.83	Bachelor's degree
19-3022	Survey researchers	19	20	1	5	0.49	12.56	Bachelor's degree
19-3031	Clinical, counseling, and school psychologists	47	59	12	26	0.48	22.43	Doctoral degree
19-3032	Industrial-organizational psychologists	21	30	9	43	0.50	21.41	Master's degree
19-3039	Psychologists, all other	21	30	9	43	0.46	21.69	Master's degree
19-4031	Chemical technicians	56	52	-4	-7	1.64	22.30	Associate's degree

SOC Code	Description	2007 Jobs	2016 Jobs	Change	% Change	2007 National LQ	2007 Median Hourly Earnings (\$)	Typical Education & Training Level
19-4051	Nuclear technicians	11	13	2	18	2.75	32.28	Associate's degree
19-4091	Environmental science and protection technicians, including health	16	20	4	25	0.79	18.10	Associate's degree
21-1011	Substance abuse and behavioral disorder counselors	32	40	8	25	0.59	16.95	Master's degree
21-1012	Educational, vocational, and school counselors	204	245	41	20	1.40	19.71	Master's degree
21-1013	Marriage and family therapists	14	16	2	14	0.65	14.15	Master's degree
21-1014	Mental health counselors	26	32	6	23	0.42	13.25	Master's degree
21-1015	Rehabilitation counselors	92	117	25	27	1.10	13.00	Master's degree
21-1019	Counselors, all other	14	16	2	14	0.61	12.83	Master's degree
21-1021	Child, family, and school social workers	348	388	40	11	2.06	13.78	Bachelor's degree
21-1022	Medical and public health social workers	79	99	20	25	1.07	17.25	Bachelor's degree
21-1023	Mental health and substance abuse social workers	80	107	27	34	1.06	12.01	Master's degree
21-1029	Social workers, all other	44	54	10	23	1.04	16.96	Bachelor's degree
21-1091	Health educators	31	41	10	32	0.87	16.21	Master's degree
21-1092	Probation officers and correctional treatment specialists	39	48	9	23	0.77	18.59	Bachelor's degree
21-1093	Social and human service assistants	179	224	45	25	0.89	9.53	Moderate-term on-the-job training
21-1099	Community and social service specialists, all other	40	51	11	28	0.57	11.22	Bachelor's degree
21-2011	Clergy	183	210	27	15	1.32	6.39	Master's degree
21-2021	Directors, religious activities and education	72	83	11	15	1.38	5.98	Bachelor's degree
21-2099	Religious workers, all other	30	34	4	13	1.29	6.00	Bachelor's degree
23-1011	Lawyers	206	242	36	17	0.43	33.69	First professional degree

SOC Code	Description	2007 Jobs	2016 Jobs	Change	% Change	2007 National LQ	2007 Median Hourly Earnings (\$)	Typical Education & Training Level
23-1023	Judges, magistrate judges, and magistrates	43	49	6	14	2.98	19.56	Degree plus work experience
23-2011	Paralegals and legal assistants	110	127	17	15	0.79	13.34	Associate's degree
23-2091	Court reporters	10	13	3	30	0.55	10.72	Postsecondary vocational award
23-2092	Law clerks	20	23	3	15	0.74	13.65	Bachelor's degree
23-2093	Title examiners, abstractors, and searchers	15	17	2	13	0.32	11.26	Moderate-term on-the-job training
23-2099	Legal support workers, all other	11	14	3	27	0.34	11.18	Bachelor's degree
25-1099	Postsecondary teachers	528	676	148	28	0.61	40.77	Doctoral degree
25-2011	Preschool teachers, except special education	299	305	6	2	1.04	8.60	Postsecondary vocational award
25-2012	Kindergarten teachers, except special education	178	218	40	22	1.69	29.52	Bachelor's degree
25-2021	Elementary school teachers, except special education	1,184	1,387	203	17	1.28	23.64	Bachelor's degree
25-2022	Middle school teachers, except special and vocational education	688	773	85	12	1.70	23.90	Bachelor's degree
25-2023	Vocational education teachers, middle school	33	21	-12	-36	1.33	15.40	Degree plus work experience
25-2031	Secondary school teachers, except special and vocational education	892	972	80	9	1.45	25.08	Bachelor's degree
25-2032	Vocational education teachers, secondary school	150	144	-6	-4	2.44	24.02	Degree plus work experience

SOC Code	Description	2007 Jobs	2016 Jobs	Change	% Change	2007 National LQ	2007 Median Hourly Earnings (\$)	Typical Education & Training Level
25-2041	Special education teachers, preschool, kindergarten, and elementary school	114	139	25	22	0.87	33.07	Bachelor's degree
25-2042	Special education teachers, middle school	74	87	13	18	1.23	25.06	Bachelor's degree
25-2043	Special education teachers, secondary school	55	61	6	11	0.68	25.44	Bachelor's degree
25-3011	Adult literacy, remedial education, and GED teachers and instructors	38	43	5	13	0.46	19.56	Bachelor's degree
25-3021	Self-enrichment education teachers	92	108	16	17	0.61	12.49	Work experience in a related field
25-3099	Teachers and instructors, all other	380	426	46	12	1.00	13.56	Bachelor's degree
25-4021	Librarians	94	106	12	13	1.04	21.27	Master's degree
25-4031	Library technicians	74	88	14	19	1.10	13.14	Postsecondary vocational award
25-9031	Instructional coordinators	121	143	22	18	1.53	22.80	Master's degree
25-9041	Teacher assistants	957	1,058	101	11	1.21	9.28	Short-term on-the-job training
25-9099	Education, training, and library workers, all other	14	15	1	7	0.23	11.61	Bachelor's degree
27-1011	Art directors	33	42	9	27	0.45	12.72	Degree plus work experience
27-1012	Craft artists	29	36	7	24	0.53	10.83	Long-term on-the-job training
27-1013	Fine artists, including painters, sculptors, and illustrators	30	38	8	27	0.51	11.29	Long-term on-the-job training
27-1014	Multi-media artists and animators	33	44	11	33	0.48	11.19	Bachelor's degree
27-1019	Artists and related workers, all other	30	37	7	23	0.53	10.72	Long-term on-the-job training

SOC Code	Description	2007 Jobs	2016 Jobs	Change	% Change	2007 National LQ	2007 Median Hourly Earnings (\$)	Typical Education & Training Level
27-1021	Commercial and industrial designers	25	32	7	28	0.61	12.02	Bachelor's degree
27-1022	Fashion designers	15	20	5	33	0.48	14.98	Associate's degree
27-1023	Floral designers	40	42	2	5	0.70	11.65	Moderate-term on-the-job training
27-1024	Graphic designers	60	79	19	32	0.43	13.79	Bachelor's degree
27-1025	Interior designers	25	34	9	36	0.48	13.03	Associate's degree
27-1026	Merchandise displayers and window trimmers	30	35	5	17	0.52	11.73	Moderate-term on-the-job training
27-1027	Set and exhibit designers	18	24	6	33	0.65	16.01	Bachelor's degree
27-1029	Designers, all other	18	22	4	22	0.62	14.56	Bachelor's degree
27-2011	Actors	18	22	4	22	0.31	8.39	Long-term on-the-job training
27-2012	Producers and directors	19	27	8	42	0.28	11.38	Degree plus work experience
27-2021	Athletes and sports competitors	18	20	2	11	0.77	13.53	Long-term on-the-job training
27-2022	Coaches and scouts	72	79	7	10	0.67	14.28	Long-term on-the-job training
27-2023	Umpires, referees, and other sports officials	15	18	3	20	0.62	7.65	Long-term on-the-job training
27-2041	Music directors and composers	60	74	14	23	0.66	6.19	Degree plus work experience
27-2042	Musicians and singers	94	112	18	19	0.74	7.00	Long-term on-the-job training

SOC Code	Description	2007 Jobs	2016 Jobs	Change	% Change	2007 National LQ	2007 Median Hourly Earnings (\$)	Typical Education & Training Level
27-2099	Entertainers and performers, sports and related workers, all other	24	26	2	8	0.34	6.67	Long-term on-the-job training
27-3011	Radio and television announcers	24	29	5	21	0.77	10.59	Long-term on-the-job training
27-3022	Reporters and correspondents	14	21	7	50	0.40	13.48	Degree plus work experience
27-3031	Public relations specialists	63	78	15	24	0.43	13.34	Bachelor's degree
27-3041	Editors	29	37	8	28	0.34	12.46	Bachelor's degree
27-3043	Writers and authors	93	122	29	31	0.43	6.25	Bachelor's degree
27-3091	Interpreters and translators	43	39	-4	-9	0.54	14.53	Long-term on-the-job training
27-3099	Media and communication workers, all other	38	33	-5	-13	0.50	13.89	Long-term on-the-job training
27-4012	Broadcast technicians	12	16	4	33	0.57	11.34	Associate's degree
27-4021	Photographers	241	217	-24	-10	0.58	11.55	Long-term on-the-job training
29-1011	Chiropractors	15	15	0	0	0.46	26.43	First professional degree
29-1021	Dentists, general	30	33	3	10	0.55	58.31	First professional degree
29-1031	Dietitians and nutritionists	25	31	6	24	0.63	21.08	Bachelor's degree
29-1051	Pharmacists	79	113	34	43	0.57	46.87	First professional degree

SOC Code	Description	2007 Jobs	2016 Jobs	Change	% Change	2007 National LQ	2007 Median Hourly Earnings (\$)	Typical Education & Training Level
29-1069	Physicians and surgeons	374	494	120	32	0.80	84.80	First professional degree
29-1071	Physician assistants	12	17	5	42	0.31	35.23	Bachelor's degree
29-1111	Registered nurses	957	1,428	471	49	0.69	30.84	Associate's degree
29-1122	Occupational therapists	30	38	8	27	0.51	29.96	Master's degree
29-1123	Physical therapists	43	60	17	40	0.40	36.65	Master's degree
29-1125	Recreational therapists	10	10	0	0	0.72	12.42	Bachelor's degree
29-1126	Respiratory therapists	28	43	15	54	0.50	26.76	Associate's degree
29-1127	Speech-language pathologists	64	75	11	17	0.87	22.48	Master's degree
29-1129	Therapists, all other	14	19	5	36	0.45	18.75	Bachelor's degree
29-1131	Veterinarians	32	44	12	38	0.85	36.33	First professional degree
29-1199	Health diagnosing and treating practitioners, all other	28	38	10	36	0.50	21.13	Bachelor's degree
29-2011	Medical and clinical laboratory technologists	50	69	19	38	0.54	21.74	Bachelor's degree
29-2012	Medical and clinical laboratory technicians	75	103	28	37	0.89	14.85	Associate's degree
29-2021	Dental hygienists	83	105	22	27	0.87	21.64	Associate's degree
29-2031	Cardiovascular technologists and technicians	19	29	10	53	0.74	20.54	Associate's degree
29-2032	Diagnostic medical sonographers	13	19	6	46	0.50	31.09	Associate's degree
29-2034	Radiologic technologists and technicians	77	111	34	44	0.70	24.99	Associate's degree

SOC Code	Description	2007 Jobs	2016 Jobs	Change	% Change	2007 National LQ	2007 Median Hourly Earnings (\$)	Typical Education & Training Level
29-2041	Emergency medical technicians and paramedics	248	401	153	62	2.20	10.46	Postsecondary vocational award
29-2051	Dietetic technicians	11	13	2	18	0.77	14.07	Moderate-term on-the-job training
29-2052	Pharmacy technicians	138	198	60	43	0.86	9.36	Moderate-term on-the-job training
29-2054	Respiratory therapy technicians	10	14	4	40	0.98	21.19	Associate's degree
29-2055	Surgical technologists	41	64	23	56	0.87	20.80	Postsecondary vocational award
29-2056	Veterinary technologists and technicians	30	44	14	47	0.73	10.68	Associate's degree
29-2061	Licensed practical and licensed vocational nurses	481	538	57	12	1.16	16.16	Postsecondary vocational award
29-2071	Medical records and health information technicians	80	109	29	36	0.85	14.35	Associate's degree
29-2081	Opticians, dispensing	29	36	7	24	0.64	11.56	Long-term on-the-job training
29-2099	Healthcare technologists and technicians, all other	15	20	5	33	0.32	18.49	Postsecondary vocational award
29-9011	Occupational health and safety specialists	35	37	2	6	1.41	20.86	Bachelor's degree
31-1011	Home health aides	592	747	155	26	1.24	7.39	Short-term on-the-job training
31-1012	Nursing aides, orderlies, and attendants	637	730	93	15	0.77	8.55	Postsecondary vocational award

SOC Code	Description	2007 Jobs	2016 Jobs	Change	% Change	2007 National LQ	2007 Median Hourly Earnings (\$)	Typical Education & Training Level
31-1013	Psychiatric aides	74	105	31	42	1.03	7.23	Short-term on-the-job training
31-2021	Physical therapist assistants	36	51	15	42	1.06	17.86	Associate's degree
31-9011	Massage therapists	42	26	-16	-38	0.77	7.47	Postsecondary vocational award
31-9091	Dental assistants	111	139	28	25	0.70	13.43	Moderate-term on-the-job training
31-9092	Medical assistants	177	260	83	47	0.74	10.78	Moderate-term on-the-job training
31-9093	Medical equipment preparers	20	29	9	45	0.68	12.15	Short-term on-the-job training
31-9094	Medical transcriptionists	36	49	13	36	0.66	12.50	Postsecondary vocational award
31-9095	Pharmacy aides	27	32	5	19	0.80	8.80	Short-term on-the-job training
31-9096	Veterinary assistants and laboratory animal caretakers	37	47	10	27	0.80	8.45	Short-term on-the-job training
31-9099	Healthcare support workers, all other	59	79	20	34	0.53	9.24	Short-term on-the-job training
33-1011	First-line supervisors/managers of correctional officers	15	17	2	13	0.71	23.14	Work experience in a related field
33-1012	First-line supervisors/managers of police and detectives	50	58	8	16	0.98	21.29	Work experience in a related field
33-1021	First-line supervisors/managers of fire fighting and prevention workers	32	38	6	19	1.12	22.27	Work experience in a related field

SOC Code	Description	2007 Jobs	2016 Jobs	Change	% Change	2007 National LQ	2007 Median Hourly Earnings (\$)	Typical Education & Training Level
33-1099	First-line supervisors/managers, protective service workers, all other	30	43	13	43	1.04	17.33	Work experience in a related field
33-2011	Fire fighters	128	154	26	20	0.79	14.88	Long-term on-the-job training
33-2021	Fire inspectors and investigators	10	12	2	20	--	--	Work experience in a related field
33-3011	Bailiffs	18	21	3	17	1.75	9.78	Moderate-term on-the-job training
33-3012	Correctional officers and jailers	597	749	152	25	2.52	13.98	Moderate-term on-the-job training
33-3021	Detectives and criminal investigators	54	69	15	28	0.94	19.76	Work experience in a related field
33-3041	Parking enforcement workers	10	12	2	20	--	--	Short-term on-the-job training
33-3051	Police and sheriff's patrol officers	570	682	112	20	1.57	17.01	Long-term on-the-job training
33-9011	Animal control workers	15	24	9	60	1.80	14.14	Moderate-term on-the-job training
33-9021	Private detectives and investigators	39	60	21	54	1.06	11.62	Work experience in a related field
33-9031	Gaming surveillance officers and gaming investigators	10	13	3	30	--	--	Moderate-term on-the-job training
33-9032	Security guards	434	649	215	50	0.74	9.00	Short-term on-the-job training
33-9091	Crossing guards	31	34	3	10	0.83	9.04	Short-term on-the-job training

SOC Code	Description	2007 Jobs	2016 Jobs	Change	% Change	2007 National LQ	2007 Median Hourly Earnings (\$)	Typical Education & Training Level
33-9092	Lifeguards, ski patrol, and other recreational protective service workers	77	88	11	14	1.15	8.40	Short-term on-the-job training
33-9099	Protective service workers, all other	36	42	6	17	0.77	10.79	Short-term on-the-job training
35-1011	Chefs and head cooks	70	78	8	11	0.96	10.92	Work experience in a related field
35-1012	First-line supervisors/managers of food preparation and serving workers	472	548	76	16	0.97	11.18	Work experience in a related field
35-2011	Cooks, fast food	812	901	89	11	2.28	6.43	Short-term on-the-job training
35-2012	Cooks, institution and cafeteria	295	315	20	7	1.27	8.07	Moderate-term on-the-job training
35-2014	Cooks, restaurant	312	320	8	3	0.65	8.12	Long-term on-the-job training
35-2015	Cooks, short order	156	164	8	5	1.37	10.43	Short-term on-the-job training
35-2021	Food preparation workers	530	602	72	14	1.04	7.17	Short-term on-the-job training
35-3011	Bartenders	164	183	19	12	0.56	6.35	Short-term on-the-job training
35-3021	Combined food preparation and serving workers, including fast food	1,053	1,253	200	19	0.75	6.28	Short-term on-the-job training
35-3022	Counter attendants, cafeteria, food concession, and coffee shop	162	180	18	11	0.54	6.77	Short-term on-the-job training
35-3031	Waiters and waitresses	1,266	1,321	55	4	0.95	6.33	Short-term on-the-job training
35-3041	Food servers, nonrestaurant	75	85	10	13	0.72	6.95	Short-term on-the-job training
35-9011	Dining room and cafeteria attendants and bartender helpers	122	125	3	2	0.52	7.30	Short-term on-the-job training

SOC Code	Description	2007 Jobs	2016 Jobs	Change	% Change	2007 National LQ	2007 Median Hourly Earnings (\$)	Typical Education & Training Level
35-9021	Dishwashers	167	171	4	2	0.57	6.64	Short-term on-the-job training
35-9031	Hosts and hostesses, restaurant, lounge, and coffee shop	121	124	3	2	0.61	6.58	Short-term on-the-job training
37-1011	First-line supervisors/managers of housekeeping and janitorial workers	258	329	71	28	1.20	8.61	Work experience in a related field
37-1012	First-line supervisors/managers of landscaping, lawn service, and groundskeeping workers	125	162	37	30	1.46	10.84	Work experience in a related field
37-2011	Janitors and cleaners, except maids and housekeeping cleaners	1,234	1,454	220	18	0.95	7.64	Short-term on-the-job training
37-2012	Maids and housekeeping cleaners	1,331	1,724	393	30	1.30	6.22	Short-term on-the-job training
37-2019	Building cleaning workers, all other	335	463	128	38	1.20	5.91	Short-term on-the-job training
37-2021	Pest control workers	72	94	22	31	1.34	9.95	Moderate-term on-the-job training
37-3011	Landscaping and groundskeeping workers	530	669	139	26	0.90	8.08	Short-term on-the-job training
37-3012	Pesticide handlers, sprayers, and applicators, vegetation	116	162	46	40	1.99	6.51	Moderate-term on-the-job training
37-3013	Tree trimmers and pruners	104	147	43	41	1.76	6.19	Short-term on-the-job training
37-3019	Grounds maintenance workers, all other	120	165	45	38	2.13	6.12	Short-term on-the-job training
39-1011	Gaming supervisors	14	17	3	21	0.56	6.71	Work experience in a related field
39-1012	Slot key persons	13	16	3	23	0.72	6.69	Postsecondary vocational award

SOC Code	Description	2007 Jobs	2016 Jobs	Change	% Change	2007 National LQ	2007 Median Hourly Earnings (\$)	Typical Education & Training Level
39-1021	First-line supervisors/managers of personal service workers	118	103	-15	-13	0.85	8.93	Work experience in a related field
39-2011	Animal trainers	81	73	-8	-10	1.51	7.73	Moderate-term on-the-job training
39-2021	Nonfarm animal caretakers	227	157	-70	-31	1.08	6.81	Short-term on-the-job training
39-3012	Gaming and sports book writers and runners	19	23	4	21	1.57	7.25	Short-term on-the-job training
39-3031	Ushers, lobby attendants, and ticket takers	33	38	5	15	0.56	8.06	Short-term on-the-job training
39-3091	Amusement and recreation attendants	124	133	9	7	0.90	7.40	Short-term on-the-job training
39-4021	Funeral attendants	31	33	2	6	1.68	11.04	Short-term on-the-job training
39-5012	Hairdressers, hairstylists, and cosmetologists	248	137	-111	-45	0.78	8.50	Postsecondary vocational award
39-6021	Tour guides and escorts	13	16	3	23	0.57	7.78	Moderate-term on-the-job training
39-9011	Child care workers	943	1,122	179	19	1.02	6.12	Short-term on-the-job training
39-9021	Personal and home care aides	511	726	215	42	1.05	7.41	Short-term on-the-job training
39-9031	Fitness trainers and aerobics instructors	91	108	17	19	0.62	9.05	Postsecondary vocational award
39-9032	Recreation workers	183	199	16	9	0.93	8.48	Short-term on-the-job training
39-9041	Residential advisors	18	21	3	17	0.59	9.73	Moderate-term on-the-job training

SOC Code	Description	2007 Jobs	2016 Jobs	Change	% Change	2007 National LQ	2007 Median Hourly Earnings (\$)	Typical Education & Training Level
39-9099	Personal care and service workers, all other	44	23	-21	-48	0.66	6.62	Short-term on-the-job training
41-1011	First-line supervisors/managers of retail sales workers	1,595	1,864	269	17	1.27	14.76	Work experience in a related field
41-1012	First-line supervisors/managers of non-retail sales workers	367	447	80	22	0.70	16.61	Work experience in a related field
41-2011	Cashiers, except gaming	2,849	2,972	123	4	1.42	7.04	Short-term on-the-job training
41-2012	Gaming change persons and booth cashiers	45	57	12	27	1.26	22.25	Short-term on-the-job training
41-2021	Counter and rental clerks	230	252	22	10	0.84	7.36	Short-term on-the-job training
41-2022	Parts salespersons	215	206	-9	-4	1.60	13.30	Moderate-term on-the-job training
41-2031	Retail salespersons	2,619	3,062	443	17	0.93	9.46	Short-term on-the-job training
41-3011	Advertising sales agents	40	63	23	58	0.32	15.45	Moderate-term on-the-job training
41-3021	Insurance sales agents	393	422	29	7	0.95	14.65	Bachelor's degree
41-3031	Securities, commodities, and financial services sales agents	147	204	57	39	0.38	11.23	Bachelor's degree
41-3041	Travel agents	11	11	0	0	0.17	14.85	Postsecondary vocational award
41-3099	Sales representatives, services, all other	144	192	48	33	0.36	14.17	Moderate-term on-the-job training

SOC Code	Description	2007 Jobs	2016 Jobs	Change	% Change	2007 National LQ	2007 Median Hourly Earnings (\$)	Typical Education & Training Level
41-4011	Sales representatives, wholesale and manufacturing, technical and scientific products	170	211	41	24	0.57	30.65	Moderate-term on-the-job training
41-4012	Sales representatives, wholesale and manufacturing, except technical and scientific products	467	580	113	24	0.51	22.99	Moderate-term on-the-job training
41-9011	Demonstrators and product promoters	40	50	10	25	0.57	8.71	Moderate-term on-the-job training
41-9012	Models	16	20	4	25	0.73	6.18	Moderate-term on-the-job training
41-9021	Real estate brokers	662	954	292	44	0.69	8.39	Work experience in a related field
41-9022	Real estate sales agents	707	1,003	296	42	0.69	8.30	Postsecondary vocational award
41-9041	Telemarketers	45	47	2	4	0.20	10.09	Short-term on-the-job training
41-9091	Door-to-door sales workers, news and street vendors, and related workers	513	632	119	23	0.82	5.90	Short-term on-the-job training
41-9099	Sales and related workers, all other	125	146	21	17	0.62	8.51	Moderate-term on-the-job training
43-1011	First-line supervisors/managers of office and administrative support workers	700	798	98	14	0.81	16.12	Work experience in a related field
43-2011	Switchboard operators, including answering service	92	92	0	0	0.91	9.36	Short-term on-the-job training
43-2021	Telephone operators	36	31	-5	-14	2.14	15.77	Short-term on-the-job training
43-3011	Bill and account collectors	177	217	40	23	0.72	10.98	Short-term on-the-job training

SOC Code	Description	2007 Jobs	2016 Jobs	Change	% Change	2007 National LQ	2007 Median Hourly Earnings (\$)	Typical Education & Training Level
43-3021	Billing and posting clerks and machine operators	236	286	50	21	0.77	11.11	Moderate-term on-the-job training
43-3031	Bookkeeping, accounting, and auditing clerks	1,126	1,357	231	21	0.88	11.03	Moderate-term on-the-job training
43-3051	Payroll and timekeeping clerks	117	134	17	15	0.97	12.93	Moderate-term on-the-job training
43-3061	Procurement clerks	35	37	2	6	0.80	12.48	Short-term on-the-job training
43-3071	Tellers	283	296	13	5	0.81	11.05	Short-term on-the-job training
43-4011	Brokerage clerks	11	11	0	0	0.26	14.57	Moderate-term on-the-job training
43-4031	Court, municipal, and license clerks	32	37	5	16	0.51	12.32	Short-term on-the-job training
43-4041	Credit authorizers, checkers, and clerks	16	15	-1	-6	0.42	12.79	Short-term on-the-job training
43-4051	Customer service representatives	632	839	207	33	0.50	12.80	Moderate-term on-the-job training
43-4071	File clerks	123	87	-36	-29	0.91	8.57	Short-term on-the-job training
43-4081	Hotel, motel, and resort desk clerks	137	143	6	4	1.10	7.15	Short-term on-the-job training
43-4111	Interviewers, except eligibility and loan	53	67	14	26	0.39	10.85	Short-term on-the-job training
43-4121	Library assistants, clerical	39	46	7	18	0.61	9.58	Short-term on-the-job training
43-4131	Loan interviewers and clerks	64	62	-2	-3	0.43	14.02	Short-term on-the-job training

SOC Code	Description	2007 Jobs	2016 Jobs	Change	% Change	2007 National LQ	2007 Median Hourly Earnings (\$)	Typical Education & Training Level
43-4141	New accounts clerks	30	24	-6	-20	0.64	14.00	Work experience in a related field
43-4151	Order clerks	67	56	-11	-16	0.44	11.88	Short-term on-the-job training
43-4161	Human resources assistants, except payroll and timekeeping	82	101	19	23	0.88	12.84	Short-term on-the-job training
43-4171	Receptionists and information clerks	425	521	96	23	0.64	9.29	Short-term on-the-job training
43-4181	Reservation and transportation ticket agents and travel clerks	15	16	1	7	0.16	11.20	Short-term on-the-job training
43-4199	Information and record clerks, all other	78	71	-7	-9	0.59	11.77	Short-term on-the-job training
43-5021	Couriers and messengers	78	99	21	27	0.44	11.86	Short-term on-the-job training
43-5031	Police, fire, and ambulance dispatchers	54	68	14	26	0.95	11.95	Moderate-term on-the-job training
43-5032	Dispatchers, except police, fire, and ambulance	102	121	19	19	0.94	12.34	Moderate-term on-the-job training
43-5041	Meter readers, utilities	38	40	2	5	1.46	10.85	Short-term on-the-job training
43-5051	Postal service clerks	25	28	3	12	0.56	21.99	Short-term on-the-job training
43-5052	Postal service mail carriers	195	213	18	9	1.04	19.97	Short-term on-the-job training
43-5053	Postal service mail sorters, processors, and processing machine operators	44	45	1	2	0.39	16.69	Short-term on-the-job training
43-5061	Production, planning, and expediting clerks	162	198	36	22	0.98	15.06	Short-term on-the-job training
43-5071	Shipping, receiving, and traffic clerks	384	459	75	20	0.88	10.91	Short-term on-the-job training

SOC Code	Description	2007 Jobs	2016 Jobs	Change	% Change	2007 National LQ	2007 Median Hourly Earnings (\$)	Typical Education & Training Level
43-5081	Stock clerks and order fillers	1,191	1,283	92	8	1.21	8.85	Short-term on-the-job training
43-5111	Weighers, measurers, checkers, and samplers, recordkeeping	26	24	-2	-8	0.57	10.41	Short-term on-the-job training
43-6011	Executive secretaries and administrative assistants	469	562	93	20	0.49	14.03	Moderate-term on-the-job training
43-6012	Legal secretaries	103	125	22	21	0.50	15.36	Postsecondary vocational award
43-6013	Medical secretaries	214	279	65	30	0.77	11.72	Postsecondary vocational award
43-6014	Secretaries, except legal, medical, and executive	1,190	1,283	93	8	1.04	11.05	Moderate-term on-the-job training
43-9011	Computer operators	29	24	-5	-17	0.39	13.20	Moderate-term on-the-job training
43-9021	Data entry keyers	82	83	1	1	0.41	9.55	Moderate-term on-the-job training
43-9022	Word processors and typists	67	68	1	1	0.60	11.87	Moderate-term on-the-job training
43-9031	Desktop publishers	10	14	4	40	0.38	8.89	Postsecondary vocational award
43-9041	Insurance claims and policy processing clerks	41	42	1	2	0.27	14.48	Moderate-term on-the-job training
43-9051	Mail clerks and mail machine operators, except postal service	23	22	-1	-4	0.25	9.67	Short-term on-the-job training

SOC Code	Description	2007 Jobs	2016 Jobs	Change	% Change	2007 National LQ	2007 Median Hourly Earnings (\$)	Typical Education & Training Level
43-9061	Office clerks, general	1,560	1,863	303	19	0.84	9.57	Short-term on-the-job training
43-9199	Office and administrative support workers, all other	58	60	2	3	0.32	12.24	Short-term on-the-job training
45-1099	Supervisors, farming, fishing, and forestry workers	45	54	9	20	1.87	19.18	Work experience in a related field
45-2011	Agricultural inspectors	13	14	1	8	1.47	15.05	Work experience in a related field
45-2041	Graders and sorters, agricultural products	23	22	-1	-4	0.69	9.20	Work experience in a related field
45-2091	Agricultural equipment operators	55	68	13	24	3.26	8.26	Moderate-term on-the-job training
45-2092	Farmworkers and laborers, crop, nursery, and greenhouse	202	247	45	22	1.18	8.21	Short-term on-the-job training
45-2093	Farmworkers, farm and ranch animals	14	15	1	7	0.43	7.63	Short-term on-the-job training
45-2099	Agricultural workers, all other	21	24	3	14	2.54	8.41	Short-term on-the-job training
45-3011	Fishers and related fishing workers	50	51	1	2	0.91	5.85	Moderate-term on-the-job training
45-4021	Fallers	88	72	-16	-18	6.97	13.01	Moderate-term on-the-job training
45-4022	Logging equipment operators	121	146	25	21	4.98	14.30	Moderate-term on-the-job training
45-4023	Log graders and scalers	25	31	6	24	2.34	20.02	Moderate-term on-the-job training

SOC Code	Description	2007 Jobs	2016 Jobs	Change	% Change	2007 National LQ	2007 Median Hourly Earnings (\$)	Typical Education & Training Level
45-4029	Logging workers, all other	14	19	5	36	1.27	26.08	Moderate-term on-the-job training
47-1011	First-line supervisors/managers of construction trades and extraction workers	735	913	178	24	1.20	18.47	Work experience in a related field
47-2021	Brickmasons and blockmasons	99	120	21	21	1.10	14.69	Long-term on-the-job training
47-2022	Stonemasons	31	39	8	26	1.01	16.37	Long-term on-the-job training
47-2031	Carpenters	1,001	1,251	250	25	1.01	15.13	Long-term on-the-job training
47-2041	Carpet installers	26	32	6	23	0.71	15.65	Moderate-term on-the-job training
47-2042	Floor layers, except carpet, wood, and hard tiles	27	32	5	19	1.10	15.24	Moderate-term on-the-job training
47-2043	Floor sanders and finishers	25	30	5	20	1.23	15.44	Moderate-term on-the-job training
47-2044	Tile and marble setters	60	78	18	30	1.31	13.66	Long-term on-the-job training
47-2051	Cement masons and concrete finishers	130	165	35	27	0.98	12.64	Moderate-term on-the-job training
47-2061	Construction laborers	853	1,081	228	27	1.05	12.59	Moderate-term on-the-job training
47-2071	Paving, surfacing, and tamping equipment operators	50	66	16	32	1.33	13.31	Moderate-term on-the-job training

SOC Code	Description	2007 Jobs	2016 Jobs	Change	% Change	2007 National LQ	2007 Median Hourly Earnings (\$)	Typical Education & Training Level
47-2072	Pile-driver operators	21	27	6	29	1.20	15.34	Moderate-term on-the-job training
47-2073	Operating engineers and other construction equipment operators	388	488	100	26	1.58	13.26	Moderate-term on-the-job training
47-2081	Drywall and ceiling tile installers	63	82	19	30	0.61	14.33	Moderate-term on-the-job training
47-2082	Tapers	31	39	8	26	0.71	16.68	Moderate-term on-the-job training
47-2111	Electricians	341	335	-6	-2	0.80	15.10	Long-term on-the-job training
47-2121	Glaziers	29	32	3	10	0.86	12.89	Long-term on-the-job training
47-2131	Insulation workers, floor, ceiling, and wall	12	15	3	25	0.62	12.60	Moderate-term on-the-job training
47-2132	Insulation workers, mechanical	13	17	4	31	0.77	13.03	Moderate-term on-the-job training
47-2141	Painters, construction and maintenance	362	431	69	19	1.12	13.92	Moderate-term on-the-job training
47-2142	Paperhangers	13	14	1	8	1.26	15.60	Moderate-term on-the-job training
47-2151	Pipelayers	132	165	33	25	2.02	13.08	Moderate-term on-the-job training
47-2152	Plumbers, pipefitters, and steamfitters	363	460	97	27	1.27	15.73	Long-term on-the-job training

SOC Code	Description	2007 Jobs	2016 Jobs	Change	% Change	2007 National LQ	2007 Median Hourly Earnings (\$)	Typical Education & Training Level
47-2161	Plasterers and stucco masons	19	24	5	26	0.54	15.41	Long-term on-the-job training
47-2171	Reinforcing iron and rebar workers	15	20	5	33	0.86	14.48	Long-term on-the-job training
47-2181	Roofers	97	103	6	6	0.89	14.30	Moderate-term on-the-job training
47-2211	Sheet metal workers	97	116	19	20	0.87	14.53	Long-term on-the-job training
47-2221	Structural iron and steel workers	33	43	10	30	0.77	18.35	Long-term on-the-job training
47-3011	Helpers, brickmasons, blockmasons, stonemasons, and tile and marble setters	55	63	8	15	1.48	10.93	Short-term on-the-job training
47-3012	Helpers, carpenters	117	142	25	21	1.91	10.40	Short-term on-the-job training
47-3013	Helpers, electricians	92	65	-27	-29	1.53	10.78	Short-term on-the-job training
47-3014	Helpers, painters, paperhangers, plasterers, and stucco masons	20	18	-2	-10	1.36	9.41	Short-term on-the-job training
47-3015	Helpers, pipelayers, plumbers, pipefitters, and steamfitters	150	190	40	27	3.08	10.24	Short-term on-the-job training
47-3019	Helpers, construction trades, all other	24	30	6	25	1.15	9.73	Short-term on-the-job training
47-4011	Construction and building inspectors	66	79	13	20	0.90	17.78	Work experience in a related field
47-4031	Fence erectors	19	24	5	26	0.97	13.19	Moderate-term on-the-job training
47-4041	Hazardous materials removal workers	34	38	4	12	1.49	14.80	Moderate-term on-the-job training

SOC Code	Description	2007 Jobs	2016 Jobs	Change	% Change	2007 National LQ	2007 Median Hourly Earnings (\$)	Typical Education & Training Level
47-4051	Highway maintenance workers	13	14	1	8	0.16	14.43	Moderate-term on-the-job training
47-4071	Septic tank servicers and sewer pipe cleaners	23	27	4	17	1.53	13.29	Moderate-term on-the-job training
49-1011	First-line supervisors/managers of mechanics, installers, and repairers	479	557	78	16	1.80	21.60	Work experience in a related field
49-2011	Computer, automated teller, and office machine repairers	53	61	8	15	0.49	12.79	Postsecondary vocational award
49-2022	Telecommunications equipment installers and repairers, except line installers	96	103	7	7	0.79	21.54	Long-term on-the-job training
49-2092	Electric motor, power tool, and related repairers	20	19	-1	-5	1.41	13.45	Postsecondary vocational award
49-2093	Electrical and electronics installers and repairers, transportation equipment	13	13	0	0	1.14	22.75	Postsecondary vocational award
49-2094	Electrical and electronics repairers, commercial and industrial equipment	55	60	5	9	1.22	20.07	Postsecondary vocational award
49-2095	Electrical and electronics repairers, powerhouse, substation, and relay	17	21	4	24	1.31	29.75	Postsecondary vocational award
49-2096	Electronic equipment installers and repairers, motor vehicles	14	15	1	7	1.25	12.88	Postsecondary vocational award
49-2097	Electronic home entertainment equipment installers and repairers	19	21	2	11	0.58	17.25	Postsecondary vocational award

SOC Code	Description	2007 Jobs	2016 Jobs	Change	% Change	2007 National LQ	2007 Median Hourly Earnings (\$)	Typical Education & Training Level
49-2098	Security and fire alarm systems installers	23	25	2	9	0.64	11.73	Postsecondary vocational award
49-3011	Aircraft mechanics and service technicians	40	40	0	0	0.57	18.33	Postsecondary vocational award
49-3021	Automotive body and related repairers	102	110	8	8	0.93	12.54	Long-term on-the-job training
49-3022	Automotive glass installers and repairers	15	15	0	0	1.14	13.09	Long-term on-the-job training
49-3023	Automotive service technicians and mechanics	462	522	60	13	0.97	12.70	Postsecondary vocational award
49-3031	Bus and truck mechanics and diesel engine specialists	139	170	31	22	0.87	14.16	Postsecondary vocational award
49-3041	Farm equipment mechanics	44	58	14	32	2.19	14.93	Postsecondary vocational award
49-3042	Mobile heavy equipment mechanics, except engines	91	108	17	19	1.27	17.10	Postsecondary vocational award
49-3051	Motorboat mechanics	18	23	5	28	1.05	11.01	Long-term on-the-job training
49-3052	Motorcycle mechanics	18	23	5	28	1.14	10.94	Long-term on-the-job training
49-3053	Outdoor power equipment and other small engine mechanics	26	27	1	4	1.26	10.85	Moderate-term on-the-job training
49-3093	Tire repairers and changers	76	82	6	8	1.27	8.93	Short-term on-the-job training
49-9012	Control and valve installers and repairers, except mechanical door	41	49	8	20	1.68	21.40	Moderate-term on-the-job training

SOC Code	Description	2007 Jobs	2016 Jobs	Change	% Change	2007 National LQ	2007 Median Hourly Earnings (\$)	Typical Education & Training Level
49-9021	Heating, air conditioning, and refrigeration mechanics and installers	244	306	62	25	1.29	14.25	Long-term on-the-job training
49-9031	Home appliance repairers	53	60	7	13	1.11	8.90	Long-term on-the-job training
49-9041	Industrial machinery mechanics	179	227	48	27	1.20	17.61	Long-term on-the-job training
49-9042	Maintenance and repair workers, general	1,126	1,321	195	17	1.40	13.25	Moderate-term on-the-job training
49-9043	Maintenance workers, machinery	82	92	10	12	1.78	16.32	Short-term on-the-job training
49-9044	Millwrights	61	80	19	31	1.97	19.17	Long-term on-the-job training
49-9051	Electrical power-line installers and repairers	107	151	44	41	1.63	22.14	Long-term on-the-job training
49-9052	Telecommunications line installers and repairers	79	99	20	25	0.77	23.53	Long-term on-the-job training
49-9062	Medical equipment repairers	13	19	6	46	0.58	12.15	Associate's degree
49-9069	Precision instrument and equipment repairers, all other	10	12	2	20	0.85	13.93	Moderate-term on-the-job training
49-9091	Coin, vending, and amusement machine servicers and repairers	39	41	2	5	1.03	9.63	Moderate-term on-the-job training
49-9092	Commercial divers	16	21	5	31	1.10	9.10	Moderate-term on-the-job training
49-9093	Fabric menders, except garment	21	29	8	38	1.54	10.43	Moderate-term on-the-job training
49-9094	Locksmiths and safe repairers	27	35	8	30	1.19	10.43	Moderate-term on-the-job training

SOC Code	Description	2007 Jobs	2016 Jobs	Change	% Change	2007 National LQ	2007 Median Hourly Earnings (\$)	Typical Education & Training Level
49-9097	Signal and track switch repairers	18	23	5	28	1.13	12.51	Moderate-term on-the-job training
49-9098	Helpers--Installation, maintenance, and repair workers	229	284	55	24	2.49	9.44	Short-term on-the-job training
49-9099	Installation, maintenance, and repair workers, all other	50	60	10	20	0.57	12.75	Moderate-term on-the-job training
51-1011	First-line supervisors/managers of production and operating workers	743	870	127	17	1.85	21.30	Work experience in a related field
51-2021	Coil winders, tapers, and finishers	13	13	0	0	0.99	17.45	Short-term on-the-job training
51-2022	Electrical and electronic equipment assemblers	45	45	0	0	0.37	14.30	Short-term on-the-job training
51-2023	Electromechanical equipment assemblers	21	23	2	10	0.62	11.27	Short-term on-the-job training
51-2031	Engine and other machine assemblers	89	113	24	27	3.52	13.13	Short-term on-the-job training
51-2041	Structural metal fabricators and fitters	50	66	16	32	0.86	18.56	Moderate-term on-the-job training
51-2091	Fiberglass laminators and fabricators	55	66	11	20	2.39	24.11	Moderate-term on-the-job training
51-2092	Team assemblers	1,930	2,281	351	18	2.70	12.84	Moderate-term on-the-job training
51-2099	Assemblers and fabricators, all other	152	132	-20	-13	0.90	14.09	Moderate-term on-the-job training
51-3011	Bakers	29	33	4	14	0.35	9.27	Long-term on-the-job training

SOC Code	Description	2007 Jobs	2016 Jobs	Change	% Change	2007 National LQ	2007 Median Hourly Earnings (\$)	Typical Education & Training Level
51-3021	Butchers and meat cutters	52	59	7	13	0.70	30.96	Long-term on-the-job training
51-3022	Meat, poultry, and fish cutters and trimmers	46	55	9	20	0.57	33.43	Short-term on-the-job training
51-3023	Slaughterers and meat packers	67	78	11	16	0.98	25.91	Moderate-term on-the-job training
51-3092	Food batchmakers	32	41	9	28	0.61	11.85	Short-term on-the-job training
51-3093	Food cooking machine operators and tenders	19	20	1	5	0.75	11.96	Short-term on-the-job training
51-4011	Computer-controlled machine tool operators, metal and plastic	60	79	19	32	0.76	15.30	Moderate-term on-the-job training
51-4012	Numerical tool and process control programmers	11	11	0	0	1.04	19.14	Long-term on-the-job training
51-4021	Extruding and drawing machine setters, operators, and tenders, metal and plastic	121	110	-11	-9	2.27	15.04	Moderate-term on-the-job training
51-4022	Forging machine setters, operators, and tenders, metal and plastic	28	25	-3	-11	1.60	15.88	Moderate-term on-the-job training
51-4023	Rolling machine setters, operators, and tenders, metal and plastic	29	31	2	7	1.47	16.74	Moderate-term on-the-job training
51-4031	Cutting, punching, and press machine setters, operators, and tenders, metal and plastic	432	457	25	6	2.81	13.50	Moderate-term on-the-job training
51-4032	Drilling and boring machine tool setters, operators, and tenders, metal and plastic	42	42	0	0	1.75	17.06	Moderate-term on-the-job training
51-4033	Grinding, lapping, polishing, and buffing machine tool setters, operators, and tenders, metal and plastic	86	91	5	6	1.51	15.02	Moderate-term on-the-job training

SOC Code	Description	2007 Jobs	2016 Jobs	Change	% Change	2007 National LQ	2007 Median Hourly Earnings (\$)	Typical Education & Training Level
51-4034	Lathe and turning machine tool setters, operators, and tenders, metal and plastic	37	38	1	3	1.00	16.76	Moderate-term on-the-job training
51-4035	Milling and planing machine setters, operators, and tenders, metal and plastic	22	20	-2	-9	1.33	16.35	Moderate-term on-the-job training
51-4041	Machinists	324	372	48	15	1.48	16.46	Long-term on-the-job training
51-4071	Foundry mold and coremakers	13	13	0	0	1.57	15.33	Moderate-term on-the-job training
51-4072	Molding, coremaking, and casting machine setters, operators, and tenders, metal and plastic	267	383	116	43	3.01	12.22	Moderate-term on-the-job training
51-4081	Multiple machine tool setters, operators, and tenders, metal and plastic	74	103	29	39	1.35	13.43	Moderate-term on-the-job training
51-4111	Tool and die makers	74	89	15	20	1.33	17.99	Long-term on-the-job training
51-4121	Welders, cutters, solderers, and brazers	236	309	73	31	1.03	14.37	Long-term on-the-job training
51-4122	Welding, soldering, and brazing machine setters, operators, and tenders	57	75	18	32	1.41	19.04	Moderate-term on-the-job training
51-4191	Heat treating equipment setters, operators, and tenders, metal and plastic	21	22	1	5	1.34	15.56	Moderate-term on-the-job training
51-4193	Plating and coating machine setters, operators, and tenders, metal and plastic	19	26	7	37	0.82	14.95	Moderate-term on-the-job training
51-4194	Tool grinders, filers, and sharpeners	13	10	-3	-23	1.26	13.43	Moderate-term on-the-job training

SOC Code	Description	2007 Jobs	2016 Jobs	Change	% Change	2007 National LQ	2007 Median Hourly Earnings (\$)	Typical Education & Training Level
51-4199	Metal workers and plastic workers, all other	14	13	-1	-7	0.51	15.63	Moderate-term on-the-job training
51-5011	Bindery workers	12	14	2	17	0.33	8.66	Short-term on-the-job training
51-5021	Job printers	26	35	9	35	0.91	13.93	Long-term on-the-job training
51-5022	Prepress technicians and workers	17	20	3	18	0.40	13.23	Postsecondary vocational award
51-5023	Printing machine operators	85	107	22	26	0.74	13.03	Moderate-term on-the-job training
51-6011	Laundry and dry-cleaning workers	135	147	12	9	0.88	6.83	Moderate-term on-the-job training
51-6021	Pressers, textile, garment, and related materials	61	58	-3	-5	1.37	7.22	Short-term on-the-job training
51-6031	Sewing machine operators	291	364	73	25	2.08	10.85	Moderate-term on-the-job training
51-6041	Shoe and leather workers and repairers	10	12	2	20	0.77	7.15	Long-term on-the-job training
51-6051	Sewers, hand	48	59	11	23	1.17	8.26	Short-term on-the-job training
51-6052	Tailors, dressmakers, and custom sewers	46	56	10	22	0.87	8.09	Long-term on-the-job training
51-6061	Textile bleaching and dyeing machine operators and tenders	91	121	30	33	7.95	12.36	Moderate-term on-the-job training
51-6062	Textile cutting machine setters, operators, and tenders	43	62	19	44	3.81	12.13	Moderate-term on-the-job training

SOC Code	Description	2007 Jobs	2016 Jobs	Change	% Change	2007 National LQ	2007 Median Hourly Earnings (\$)	Typical Education & Training Level
51-6063	Textile knitting and weaving machine setters, operators, and tenders	257	396	139	54	11.16	13.92	Long-term on-the-job training
51-6064	Textile winding, twisting, and drawing out machine setters, operators, and tenders	284	458	174	61	11.10	13.41	Moderate-term on-the-job training
51-6091	Extruding and forming machine setters, operators, and tenders, synthetic and glass fibers	78	55	-23	-29	7.80	16.05	Moderate-term on-the-job training
51-6092	Fabric and apparel patternmakers	14	19	5	36	2.71	13.42	Long-term on-the-job training
51-6093	Upholsterers	40	46	6	15	0.71	7.76	Long-term on-the-job training
51-6099	Textile, apparel, and furnishings workers, all other	44	60	16	36	3.32	13.06	Short-term on-the-job training
51-7011	Cabinetmakers and bench carpenters	107	133	26	24	1.28	16.75	Long-term on-the-job training
51-7021	Furniture finishers	14	16	2	14	0.53	8.32	Long-term on-the-job training
51-7041	Sawing machine setters, operators, and tenders, wood	42	49	7	17	1.11	28.76	Moderate-term on-the-job training
51-7042	Woodworking machine setters, operators, and tenders, except sawing	50	58	8	16	0.88	11.88	Moderate-term on-the-job training
51-8013	Power plant operators	45	58	13	29	2.23	26.66	Long-term on-the-job training
51-8021	Stationary engineers and boiler operators	29	34	5	17	1.14	19.08	Long-term on-the-job training
51-8031	Water and liquid waste treatment plant and system operators	103	128	25	24	1.70	17.10	Long-term on-the-job training
51-8091	Chemical plant and system operators	132	119	-13	-10	4.34	20.49	Long-term on-the-job training

SOC Code	Description	2007 Jobs	2016 Jobs	Change	% Change	2007 National LQ	2007 Median Hourly Earnings (\$)	Typical Education & Training Level
51-9011	Chemical equipment operators and tenders	222	210	-12	-5	7.64	19.90	Moderate-term on-the-job training
51-9012	Separating, filtering, clarifying, precipitating, and still machine setters, operators, and tenders	27	29	2	7	1.08	16.88	Moderate-term on-the-job training
51-9021	Crushing, grinding, and polishing machine setters, operators, and tenders	19	20	1	5	0.81	13.55	Moderate-term on-the-job training
51-9022	Grinding and polishing workers, hand	25	34	9	36	0.99	11.81	Moderate-term on-the-job training
51-9023	Mixing and blending machine setters, operators, and tenders	132	134	2	2	1.66	16.25	Moderate-term on-the-job training
51-9031	Cutters and trimmers, hand	17	24	7	41	1.02	10.28	Short-term on-the-job training
51-9032	Cutting and slicing machine setters, operators, and tenders	119	141	22	18	2.67	9.48	Moderate-term on-the-job training
51-9041	Extruding, forming, pressing, and compacting machine setters, operators, and tenders	132	126	-6	-5	2.82	16.36	Moderate-term on-the-job training
51-9051	Furnace, kiln, oven, drier, and kettle operators and tenders	26	30	4	15	1.67	13.60	Moderate-term on-the-job training
51-9061	Inspectors, testers, sorters, samplers, and weighers	696	771	75	11	2.48	12.22	Moderate-term on-the-job training
51-9071	Jewelers and precious stone and metal workers	18	23	5	28	0.60	39.67	Postsecondary vocational award
51-9081	Dental laboratory technicians	14	17	3	21	0.50	69.80	Long-term on-the-job training

SOC Code	Description	2007 Jobs	2016 Jobs	Change	% Change	2007 National LQ	2007 Median Hourly Earnings (\$)	Typical Education & Training Level
51-9111	Packaging and filling machine operators and tenders	366	398	32	9	1.67	12.13	Short-term on-the-job training
51-9121	Coating, painting, and spraying machine setters, operators, and tenders	178	188	10	6	2.93	12.13	Moderate-term on-the-job training
51-9122	Painters, transportation equipment	36	36	0	0	1.12	15.20	Long-term on-the-job training
51-9123	Painting, coating, and decorating workers	24	30	6	25	1.21	11.35	Short-term on-the-job training
51-9132	Photographic processing machine operators	32	22	-10	-31	1.00	9.65	Short-term on-the-job training
51-9141	Semiconductor processors	13	16	3	23	0.53	31.94	Associate's degree
51-9191	Cementing and gluing machine operators and tenders	11	14	3	27	0.84	11.33	Moderate-term on-the-job training
51-9195	Molders, shapers, and casters, except metal and plastic	22	29	7	32	0.81	17.83	Moderate-term on-the-job training
51-9196	Paper goods machine setters, operators, and tenders	91	115	24	26	1.41	17.84	Moderate-term on-the-job training
51-9197	Tire builders	64	65	1	2	4.95	16.30	Moderate-term on-the-job training
51-9198	Helpers--Production workers	301	379	78	26	0.98	9.88	Short-term on-the-job training
51-9199	Production workers, all other	174	216	42	24	1.04	14.53	Moderate-term on-the-job training
53-1021	First-line supervisors/managers of helpers, laborers, and material movers, hand	130	157	27	21	1.23	16.87	Work experience in a related field

SOC Code	Description	2007 Jobs	2016 Jobs	Change	% Change	2007 National LQ	2007 Median Hourly Earnings (\$)	Typical Education & Training Level
53-1031	First-line supervisors/managers of transportation and material-moving machine and vehicle operators	104	128	24	23	0.80	21.27	Work experience in a related field
53-2011	Airline pilots, copilots, and flight engineers	11	11	0	0	0.23	24.33	Bachelor's degree
53-2012	Commercial pilots	21	22	1	5	0.98	20.61	Postsecondary vocational award
53-2021	Air traffic controllers	10	12	2	20	0.80	41.10	Long-term on-the-job training
53-3011	Ambulance drivers and attendants, except emergency medical technicians	137	222	85	62	11.46	6.45	Moderate-term on-the-job training
53-3021	Bus drivers, transit and intercity	86	71	-15	-17	0.73	10.48	Moderate-term on-the-job training
53-3022	Bus drivers, school	478	549	71	15	1.74	9.22	Short-term on-the-job training
53-3031	Driver/sales workers	381	459	78	20	1.07	13.51	Short-term on-the-job training
53-3032	Truck drivers, heavy and tractor-trailer	1,313	1,675	362	28	1.21	13.93	Moderate-term on-the-job training
53-3033	Truck drivers, light or delivery services	926	1,137	211	23	1.38	13.14	Short-term on-the-job training
53-3041	Taxi drivers and chauffeurs	114	130	16	14	0.64	8.85	Short-term on-the-job training
53-3099	Motor vehicle operators, all other	18	20	2	11	0.42	15.89	Short-term on-the-job training
53-4019	Locomotive engineers and operators	29	31	2	7	1.30	25.98	Moderate-term on-the-job training

SOC Code	Description	2007 Jobs	2016 Jobs	Change	% Change	2007 National LQ	2007 Median Hourly Earnings (\$)	Typical Education & Training Level
53-4021	Railroad brake, signal, and switch operators	14	15	1	7	1.16	23.27	Moderate-term on-the-job training
53-4031	Railroad conductors and yardmasters	20	20	0	0	1.12	26.80	Moderate-term on-the-job training
53-6021	Parking lot attendants	42	50	8	19	0.54	9.23	Short-term on-the-job training
53-6031	Service station attendants	34	39	5	15	0.63	14.29	Short-term on-the-job training
53-6099	Transportation workers, all other	12	13	1	8	0.54	11.45	Short-term on-the-job training
53-7011	Conveyor operators and tenders	53	59	6	11	1.96	12.71	Short-term on-the-job training
53-7021	Crane and tower operators	41	52	11	27	1.54	18.47	Long-term on-the-job training
53-7032	Excavating and loading machine and dragline operators	76	95	19	25	1.76	15.80	Moderate-term on-the-job training
53-7051	Industrial truck and tractor operators	493	521	28	6	1.35	10.50	Short-term on-the-job training
53-7061	Cleaners of vehicles and equipment	270	306	36	13	1.32	9.49	Short-term on-the-job training
53-7062	Laborers and freight, stock, and material movers, hand	2,592	2,807	215	8	1.87	11.10	Short-term on-the-job training
53-7063	Machine feeders and offbearers	136	147	11	8	1.61	10.93	Short-term on-the-job training
53-7064	Packers and packagers, hand	514	508	-6	-1	1.08	8.40	Short-term on-the-job training
53-7072	Pump operators, except wellhead pumpers	10	13	3	30	--	--	Moderate-term on-the-job training
53-7081	Refuse and recyclable material collectors	238	315	77	32	2.85	11.13	Short-term on-the-job training

SOC Code	Description	2007 Jobs	2016 Jobs	Change	% Change	2007 National LQ	2007 Median Hourly Earnings (\$)	Typical Education & Training Level
53-7121	Tank car, truck, and ship loaders	16	19	3	19	1.83	15.50	Moderate-term on-the-job training
53-7199	Material moving workers, all other	27	28	1	4	0.95	11.56	Moderate-term on-the-job training
		98,144	114,278	16,133	16		14.35	

at least 1.25 greater than \$14.35

Source: EMSI



South Carolina
Department of Commerce
1201 Main Street, Suite 1600
Columbia, SC 29201

(800) 868-7232
(803) 737-0400
www.sccommerce.com